



“ULTRA” ELECTROPERM MAGNETIC LIFTER
For Plate Handling.



MODULAR FLEXIBLE
EPM LIFTER

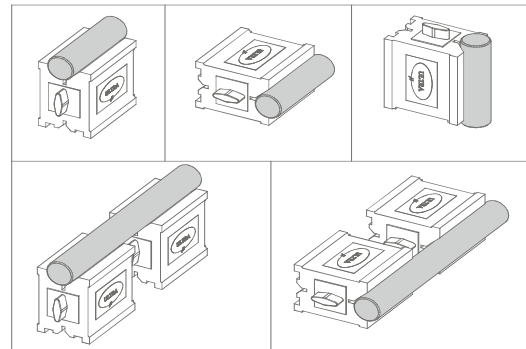
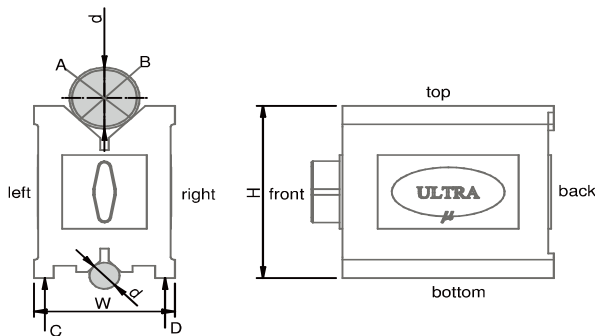


“ULTRA” ELECTRO PERMANENT
MAGNETIC TILTING LIFTER
for Sheets.

1 SERIES UL - 320 "ULTRA" BRAND HARDENED MAGNETIC "V" BLOCKS

ALL SIDES ARE HARDENED & GROUND.

- Used for grinding, light Milling, Drilling & inspection of round & square Jobs.
- Surface A, B, C, D are hardened to Hardness $60 \pm 2Rc$.
Two V block per set.
- Uniform and Strong magnetic pull to all three magnetic surfaces,
- Top, Bottom & V Faces.
- Easy ON - OFF facility.



Series Code	Size (LxWxH) (mm/inch)	Range of Shaft	Pull Force (kgf)	Accuracy* (mm/inches)
UL-32001 Hard	45 L x 40 W x 55 H [2"]	DIA 3- 25mm (DIA 0.12-1")	30 kg	0.005mm (0.0002")
UL-32002 Hard	75 L x 56 W x 75 H [3"]	DIA 5- 40mm (DIA 0.2-1.57")	85 kg	0.005mm (0.0002")
UL-32003 Hard	100 L x 70 W x 95 H [4"]	DIA 5- 65mm (DIA 0.2-2.56")	150 kg	0.005mm (0.0002")
UL-32004 Hard	150 L x 75 W x 100 H [6"]	DIA 5- 70mm (DIA 0.2-2.75")	190 kg	0.006mm (0.00024")
UL-32005 Hard	200 L x 125 W x 150 H [8"]	DIA 10 - 140mm (DIA 0.4-5.51")	400 kg	0.012mm (0.00047")
UL-32006 Hard	160 L x 125 W x 125 H [spl 6"]	DIA 5 - 140mm (DIA 0.2-5.51")	220 kg	0.012mm (0.00047")

*Accuracy of Parallelism, Squareness in Matched Pair

Comparison between Ultra brand products and other brand products



Due to All sides harden 40% better life compared with ordinary blade and bit pasted harden V blocks



2 SERIES UL - 101

"ULTRA" BRAND MAGNETIC "V" BLOCKS (Soft)



- Used for Grinding, Light Milling, Drilling & Inspection of Round & Square Jobs
- Accuracy for Flatness, Squariness and Parallelism within 0.005mm upto 150 mmL & 0.010 mm for 200 mmL of "V" block
- Uniform and strong magnetic pull to all three magnetic surfaces Top, Bottom & V face
- Easy ON - OFF facility.
- 120 "V" angle also available.

3 SERIES UL - 101

"ULTRA" BRAND LEAKPROOF MAGNETIC "V" BLOCKS

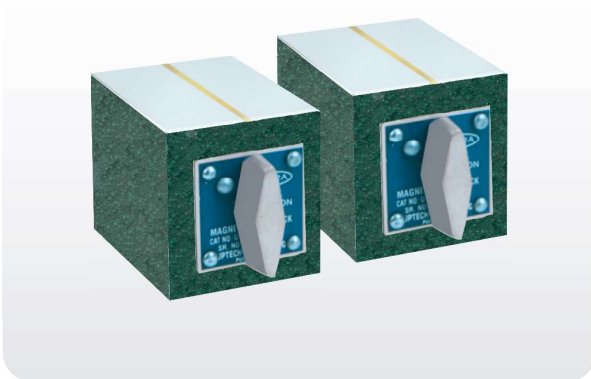


- Used for clamping of round and flat jobs during EDM operations, Light machining, Grinding or Drilling & Inspection
- Accuracy for Flatness, Squareness & Parallelism within 0.005mm. upto 120L & 0.010mm. upto 170L of 'V' Block
- Uniform magnetic pull.
- Three magnetic surfaces Top, Bottom & V faces.
- Hardness of V face is 60±2 Rc.

Cat No.	Size (mm)	Range (mm)	Pull
All sides are Hardened			
UL-10108	120 L x 70 W x 95 H	Ø 5 - Ø 65	100 kg
UL-10109	170 L x 75 W x 100 H	Ø 5 - Ø 70	125 kg

4 SERIES UL - 201

"ULTRA" BRAND MAGNETIC RECTANGULAR BLOCKS



- Used for Grinding, Light Milling, Drilling & Inspection of Round & Square Jobs.
- Accuracy for Parallelism is within 0.010mm.
- Provided with ON-OFF switch except for 25 x 25mm block.
- Supplied in perfect matched pair. Harden Strips provided in hard pair.

Sr. No.	Cat No.	Size (mm)
1.	UL-20101 Soft	25 L x 25 W x 25 H
2.	UL-20102 Soft	75 L x 56 W x 60 H
3.	UL-20103 Soft	100 L x 70 W x 70 H
4.	UL-20104 Soft	150 L x 70 W x 85 H
1.	UL-20102 Hard	75 L x 56 W x 60 H
2.	UL-20103 Hard	100 L x 70 W x 70 H
3.	UL-20104 Hard	150 L x 70 W x 85 H

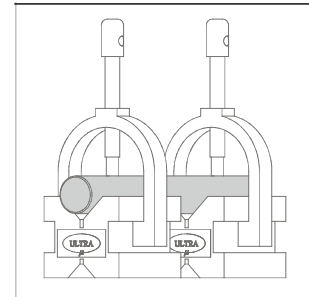
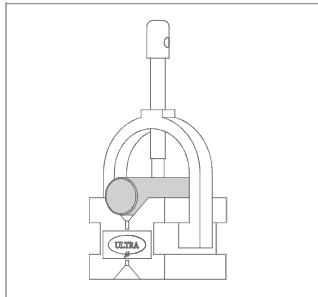
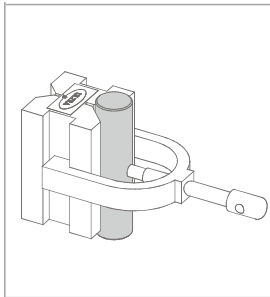
5 SERIES **UL - 102** "ULTRA" BRAND HARDENED & GROUND "V" BLOCKS



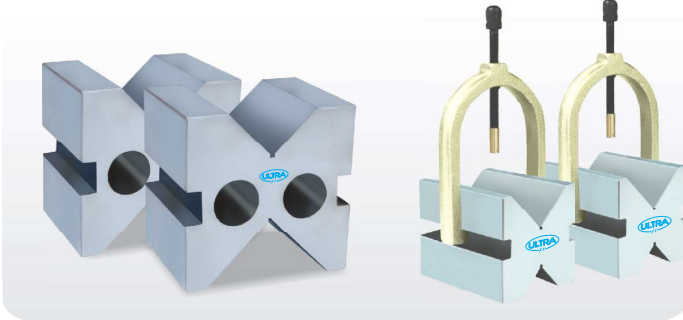
- Used for supporting of round and square jobs during Light Machining, Grinding, Drilling & Inspection.
- Hardness 60±2 Rc.
- Two V Block Per Set.
- Supplied with clamp.
- Can also be used for end face, side face and right angle Grinding

Cat No.	Size (mm)	Range of Shaft	Accuracy* (mm/inches)
UL-10202	50 L x 40 W x 40 H [2"]	DIA 05 - 30 (DIA 0.2 - 1.18")	0.005 (0.0002")
UL-10203	80 L x 63 W x 63 H [3"]	DIA 07 - 63 (DIA 0.27 - 2.48")	0.005 (0.0002")
UL-10204	100 L x 80 W x 80 H [4"]	DIA 07 - 80 (DIA 0.27 - 3.15")	0.006 (0.00024")

*Accuracy of Parallelism, Squareness in Matched Pair



6 SERIES **UL - 105** "ULTRA" BRAND HARDENED & GROUND "V" BLOCK WITH CLAMP



- Used for Grinding, Light Milling, Drilling & Inspection of Round & Square Jobs.
- Accuracy as per IS - 2949 - 1974.
- Hardness 60±2 Rc.
- Supplied in perfect matched pair.
- End face grinding, square with sides is possible.
- Two 90° "V" angle for different capacities.
- Special sizes can also be manufactured.
- Supplied with Clamp.

Sr. No.	Cat No.	Size (mm)	Range (mm)
1.	UL-10501	50 L x 40 W x 40 H	Ø 5 - Ø 40
2.	UL-10502	50 L x 50 W x 50 H	Ø 5 - Ø 50
3.	UL-10503	63 L x 50 W x 50 H	Ø 5 - Ø 50
4.	UL-10504	63 L x 80 W x 80 H	Ø 7 - Ø 80
5.	UL-10505	63 L x 100 W x 100 H	Ø 8 - Ø 100
6.	UL-10506	70 L x 140 W x 140 H	Ø 9 - Ø 140
7.	UL-10507	80 L x 63 W x 63 H	Ø 7 - Ø 63
8.	UL-10508	100 L x 80 W x 80 H	Ø 7 - Ø 80
9.	UL-10509	150 L x 200 W x 200 H	Ø 10 - Ø 200
10.	UL-10510	200 L x 200 W x 200 H	Ø 10 - Ø 200



7 SERIES UL - 103

"ULTRA" BRAND HARDENED & GROUND "V" BLOCKS

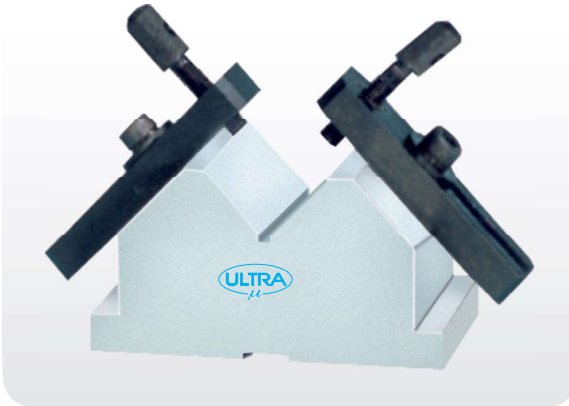


- Used for Grinding, Light Milling, Drilling & Inspection of Round & Square Jobs.
- Accuracy for Flatness, Squareness and Parallelism within 0.010mm up to 150W above that 0.020mm up to 200W.
- Hardness 60±3 Rc.
- Supplied in perfect matched pair.
- Supplied with clamp which can be used from both sides to suit job dimensions.
- Holds & Clamps the heavy jobs rigidly.
- Can also be used for end face, side face and right angle Grinding

Cat No.	Size (mm)	Range (mm)
UL-10301	65 L x 150W x 75 H	Ø 5 - Ø 100
UL-10302	65 L x 175 W x 100 H	Ø 5 - Ø 125
UL-10303	75 L x 200 W x 125 H	Ø 5 - Ø 150

8 SERIES UL - 104

"ULTRA" BRAND HARDENED & GROUND "V" BLOCKS



- Used for Grinding, Light Milling, Drilling & Inspection of Round & Square Jobs.
- Accuracy for Flatness, Squareness and Parallelism within 0.010mm up to 150W above that 0.020mm up to 200W.
- Tenon slot (16x3) at bottom can be used for clamping on machine bed.
- Hardness 60±3 Rc.
- Entire top of V is accessible due to unique design.
- Supplied in perfect matched pair.

Cat No.	Size (mm)	Range (mm)
UL-10401	75 L x 120W x 60H	Ø 5 - Ø 50
UL-10402	100 L x 150W x 75H	Ø 5 - Ø 75
UL-10403	125 L x 200W x 100H	Ø 5 - Ø 100

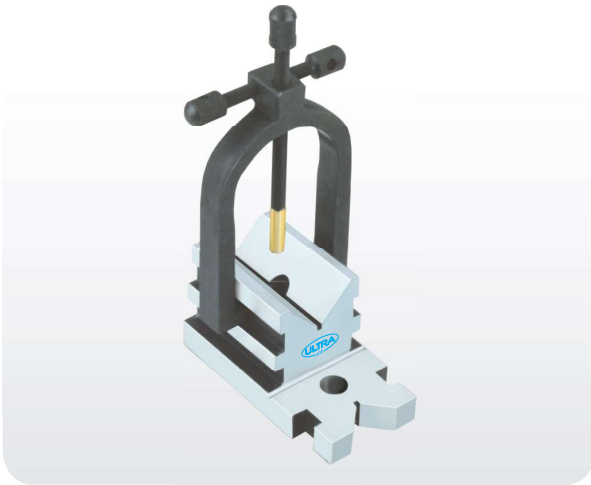
9 SERIES UL - 106

"ULTRA" BRAND UNIVERSAL "V" BLOCK



- Used for Grinding, Light Milling, Drilling & Inspection of Round & Square Jobs.
- Accuracy as per IS - 4960 - 1968.
- Grade A - made from alloy steel material & Hardness is 60±2 Rc.
- Grade B - made from hard cast iron & scrapped..
- Four different 90° V opening to suit various sizes.
- Supplied in perfect matched pair.
- Also available to suit your specifications.

Sr. No.	Cat No.	Size (mm)	Grade A
1.	UL-10601	63 L x 100 W x 100 H	✓
2.	UL-10602	80 L x 160 W x 160 H	✓
3.	UL-10603	100 L x 200 W x 200 H	✓
4.	UL-10604	125 L x 300 W x 300 H	—
5.	UL-10605	120 L x 120 W x 60 H	✓
6.	UL-10606	150 L x 150 W x 75 H	✓
7.	UL-10607	190 L x 190 W x 90 H	✓

10 SERIES UL - 108
"ULTRA" BRAND HARDENED & GROUND TOOL-ROOM "V" BLOCK


- Used for Grinding, Light Milling, Drilling & Inspection of Round & Square Jobs.
- Accuracy for Flatness, Squareness and Parallelism within 0.010mm.
- Can be used on its base, the ends & on either side.
- Hardness 60±2 Rc.
- M10 tapping at base M8 tapping on side for clamping on angle plate or face plate or on magnetic chuck.
- A clamp with cap & adjustable screws prevents tilting of block.
- A clearance hole at centre for drilling or removing of dowel pins.
- The "V" at stepped end at right angle to the base provides a handy means for holding shouldered studs, round pins etc.

Cat No.	Size (mm)	Range (mm)
UL-10801	48 square x 90 L.	Ø 5 - Ø 33

11 SERIES UL - 109
"ULTRA" BRAND HARDENED & GROUND "V" BLOCKS


- Used for Grinding, Light Milling, Drilling & Inspection of Round & Square Jobs.
- Accuracy for Flatness, Squareness and Parallelism within 0.008mm.
- It can be used on the base, ends & sides.
- Hardness 60±2 Rc & supply in perfect matched pair.
- Clamps has tapping holes at 45° & 90° for clamping the square & round jobs.
- Stepped groove design permits clamping of small or large jobs.

Cat No.	Size (mm)	Range (mm)
UL-10901	65 L x 70W x 50H	Ø 5 - Ø 50 round 35 mm square.

12 SERIES UL - 113
"ULTRA" BRAND HARDENED & GROUND "V" BLOCKS

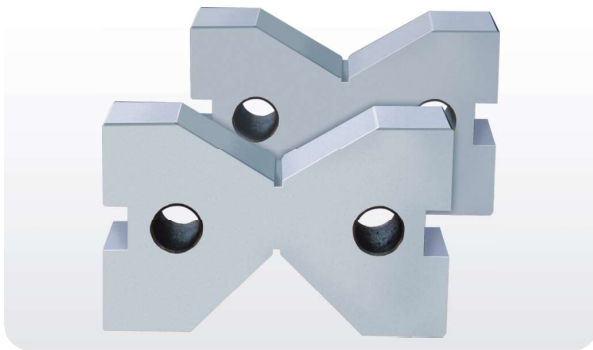

- Used for Grinding, Light Milling, Drilling & Inspection of Round & Square Jobs.
- Accuracy for Flatness, Squareness and Parallelism within 0.010mm.
- It can be used on the base, ends & sides.
- Hardness 60±3 Rc & supplied in perfect matched pair.
- Sturdy clamps for better clamping of jobs.
- End face grinding, right angle with sides is possible.

Cat No.	Size (mm)	Range (mm)
UL-11301	40 L x 35 H x 45W	Ø 3 - Ø 25
UL-11302	55 L x 40 H x 55 W	Ø 3 - Ø 40
UL-11303	65 L x 45 H x 70 W	Ø 5 - Ø 50
UL-11304	90 L x 70 H x 125 W	Ø 5 - Ø 60



13 SERIES UL - 114

"ULTRA" BRAND HARDENED & GROUND "V" BLOCKS WITH CLAMP



- Used for Grinding, Light Milling, Drilling & Inspection of Round & Square Jobs.
- Accuracy 0,010mm.
- Hardness 60±2 Rc.
- Supplied in perfect matched pair
- Top angle 120°
- Bottom angle 90°
- Suitable for checking of lobbing.
- Sturdy clamps for better clamping of the job

Cat No.	Size (mm)	Range (mm)
UL-11401	45 L x 120 W x 75 H	Ø 9 - Ø 125

14 SERIES UL - 110

"ULTRA" BRAND ROLLER BEARING "V" BLOCK



UL-11001



UL-11002

- Used for checking heavy and odd shaped round jobs.
- Perfectly matched pair. Accuracy :- Paralality 10 micron for all series.
- Included angle of rollers is 90°.
- Standard bearings are used which are replaceable.
- Jobs don't get damaged due to bearing on top.
- **Special sizes suitable for different diameter manufactured on request.**

Cat No.	Size Top	Size Botom	Height	Range	Load Capacity
UL-11001	150 L x 40W	150 L x 80W	100 H	Ø3 - Ø55	1000 Kgs
UL-11002	150 L x 22W	150 L x 60W	100 H	Ø25 - Ø70	500 Kgs
UL-11003	230 L x 60W	230 L x 100W	150 H	Ø70 - Ø200	1000 Kgs

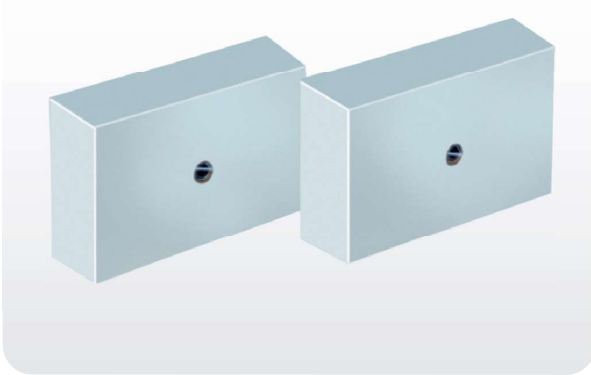
15 SERIES UL - 111

"ULTRA" BRAND B (BALL) BLOCKS



- Used for checking of heavy round & cylindrical jobs.
- Supplied in perfectly matched pair having accuracy 0.010mm.
- Four hard steel balls on top face provides self-aligning, hard wearing, accurate support.
- Ball wearing is even, so accuracy doesn't get affected.
- Ball can be replaced and readjusted with minimum effort & cost

Cat No.	Size (mm)	Max. Load Capacity
UL-11101	55 L x 55 W x 35 H	100 Kg
UL-11102	85 L x 85 W x 45 H	300 Kg
UL-11103	120 L x 120 W x 70 H	500 Kg

16 SERIES UL - 303
"ULTRA" BRAND 1-2-3 BLOCKS WITH 1 HOLE


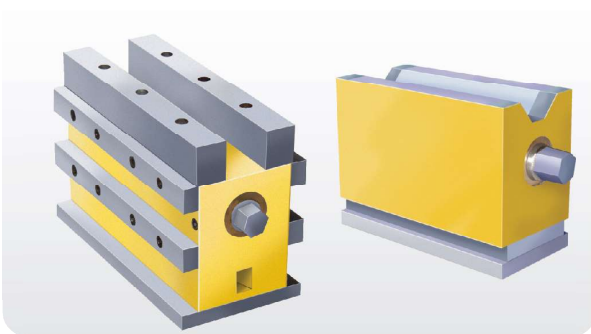
- Used for accurate mounting & quick setting during Inspection, tool setting & machining.
- Made from alloy steel material.
- Hardness 60 ± 2 Rc.
- Accuracy for Parallelism & Squareness within 0.005mm. M8 tapped hole provided at centre.

Cat No.	Size (mm)
UL-30301	75 L x 50 W x 25 T

17 SERIES UL - 612
"ULTRA" BRAND MAGNETIC CLAMPING BLOCK


- Suitable for drilling & light Machining.
- Easy to operate.
- Saves time as mechanical clamps are avoided.
- Economical for operation & maintenance.
- Powerful holding with the magnet.
- Vertical lifting force is 35 to 40 kg per cm sq.

Cat No.	Size (mm)
UL-61201	120 L x 85 W x 130 H

18 SERIES UL - 807
"ULTRA" BRAND HEAVY DUTY MAGNETIC HOLDER


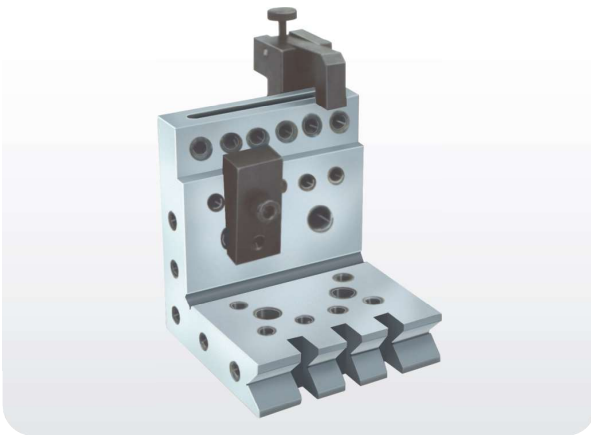
- All surfaces are hardened & ground for cat no. 80701
- Suitable for conventional & CNC Milling.
- Suitable for milling 1 to 3mm
- Economical for operation & maintenance.
- No accidents due to power failure.
- Slipping force 2.5 kg / cm²
- Vertical lifting force is 35 - 40 kg / cm²

Cat No.	Size (mm)
UL - 80701	230 L x 115 W x 160 H
UL - 80702	175 L x 085 W x 130 H



19 SERIES UL - 308

"ULTRA" BRAND HARDENED & GROUND PRECISION ANGLE PLATE

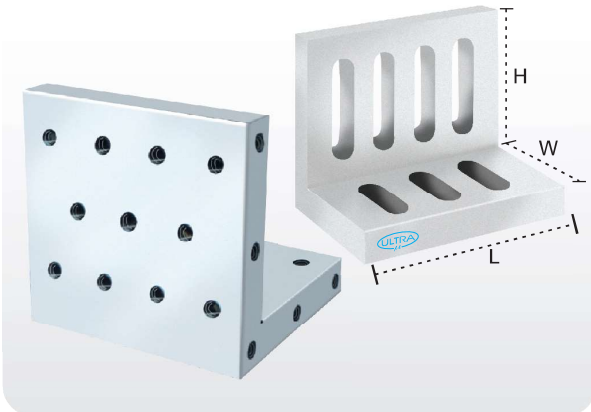


- These angle plates are invaluable for accurate work in Tool room, right angle machining & grinding.
- Made from single piece high quality alloy steel.
- Accuracy for Square ness, Flatness & Parallelism Within 0.007 mm.
- Hardness - 60 ± 2 Rc.
- Unique design to hold small cylindrical parts also.
- M6 & M8 tapped holes for clamping.
- Three clamps provided for different clamping.

Cat No.	Size (mm)
UL-30801	100 x 100 x 115

20 SERIES UL - 309

"ULTRA" BRAND HARDENED & GROUND PRECISION ANGLE PLATE



- These angle plates are invaluable for accurate work in Tool room, right angle machining & grinding.
- Made from single piece high quality alloy steel.
- Accuracy for Square ness, Flatness & Parallelism is within 0.010mm upto 150L & within 0.015mm upto 300L.
- M6 & M8 tapped holes or slots are provided for clamping.
- Hardness - 60 ± 2 Rc.

Cat No.	Size (mm)
UL-30901	115 H x 150 W x 150 L
UL-30902	150 H x 150 W x 150 L
UL-30903	150 H x 150 W x 225 L
UL-30904	150 H x 225 W x 300 L

- Slotted Angle Plate On Request.

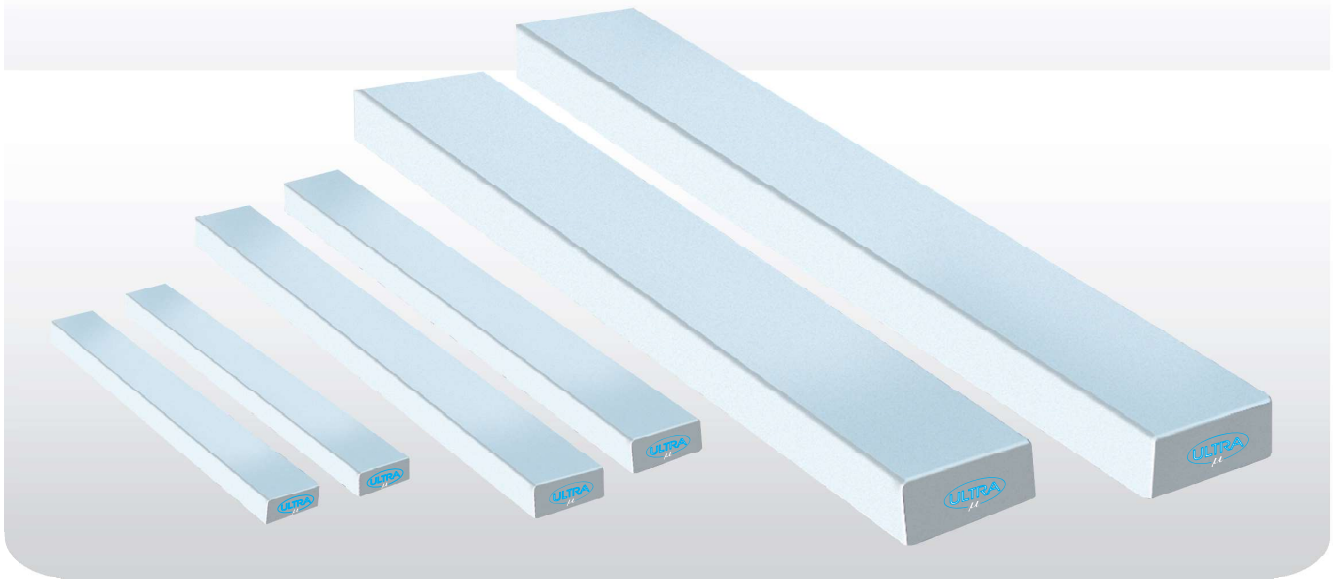
21 SERIES UL - 608

"ULTRA" BRAND ELECTRO MAGNETIC ANGLE PLATE



- Used as a workpiece holding device for Squareness grinding, inspection & light machining.
- Accuracy for Squareness & parallelism is within 0.005mm.
- Operates on 24 VDC, controlled by Mag-D-Mag with variable control unit with Two Individual ON - OFF.
- Easy to operate.
- Saves time as mechanical clamps are avoided.
- DEMAG switch for easy removal of jobs.
- Battery back-up unit is also available on request.

Sr. No.	Cat No.	Size (mm)	Magnetic Pull
1.	UL 60801	150 x 150 x 160	125 Kg
2.	"ULTRA" MAG D-MAG WITH VARIABLE CONTROL UNIT	----	-----

22 SERIES UL - 301
"ULTRA" BRAND PARALLEL BLOCKS (Sizes are nominal)


- Used for accurate supporting of jobs
Made from special quality alloy steel material.
- Hardness 60 ± 2 Rc.
- Accuracy for Parallelism, flatness
is 0.010mm upto 200mm L & 0.025mm upto 450mm L
- Special sizes are available as per Requirement.

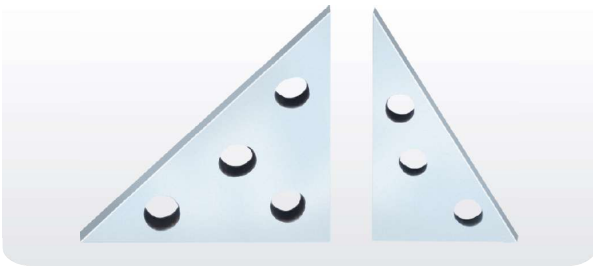
Sr. No.	Cat No.	Size (mm)
1	UL - 30101	100 L x 10 W x 5 H
2	UL - 30102	100 L x 12 W x 5 H
3	UL - 30103	100 L x 15 W x 5 H
4	UL - 30104	100 L x 20 W x 5 H
5	UL - 30105	150 L x 10 W x 6 H
6	UL - 30106	150 L x 12 W x 6 H
7	UL - 30107	150 L x 15 W x 6 H
8	UL - 30108	150 L x 20 W x 6 H
9	UL - 30109	150 L x 10 W x 10 H
10	UL - 30110	150 L x 12 W x 10 H
11	UL - 30111	150 L x 15 W x 10 H
12	UL - 30112	150 L x 20 W x 10 H
13	UL - 30113	150 L x 15 W x 15 H
14	UL - 30114	150 L x 20 W x 15 H
15	UL - 30115	150 L x 25 W x 15 H
16	UL - 30116	150 L x 30 W x 15 H
17	UL - 30117	200 L x 20 W x 15 H
18	UL - 30118	200 L x 25 W x 15 H
19	UL - 30119	200 L x 30 W x 20 H
20	UL - 30120	200 L x 40 W x 20 H
21	UL - 30121	200 L x 20 W x 25 H
22	UL - 30122	200 L x 30 W x 25 H
23	UL - 30123	200 L x 40 W x 25 H
24	UL - 30124	200 L x 50 W x 25 H
25	UL - 30125	250 L x 15 W x 20 H
26	UL - 30126	250 L x 20 W x 20 H

Sr. No.	Cat No.	Size (mm)
27	UL - 30127	250 L x 25 W x 20 H
28	UL - 30128	250 L x 30 W x 20 H
29	UL - 30129	250 L x 40 W x 25 H
30	UL - 30130	250 L x 50 W x 25 H
31	UL - 30131	250 L x 50 W x 30 H
32	UL - 30132	250 L x 60 W x 30 H
33	UL - 30133	300 L x 25 W x 25 H
34	UL - 30134	300 L x 30 W x 25 H
35	UL - 30135	300 L x 40 W x 25 H
36	UL - 30136	300 L x 50 W x 25 H
37	UL - 30137	300 L x 40 W x 35 H
38	UL - 30138	300 L x 50 W x 35 H
39	UL - 30139	300 L x 60 W x 35 H
40	UL - 30140	300 L x 70 W x 35 H
41	UL - 30141	350 L x 30 W x 40 H
42	UL - 30142	350 L x 40 W x 40 H
43	UL - 30143	350 L x 50 W x 40 H
44	UL - 30144	350 L x 70 W x 40 H
45	UL - 30145	400 L x 50 W x 50 H
46	UL - 30146	400 L x 60 W x 50 H
47	UL - 30147	400 L x 75 W x 50 H
48	UL - 30148	400 L x 100 W x 50 H
49	UL - 30149	450 L x 50 W x 50 H
50	UL - 30150	450 L x 60 W x 50 H
51	UL - 30151	450 L x 75 W x 50 H
52	UL - 30152	450 L x 100 W x 50 H



23 SERIES UL - 302

"ULTRA" BRAND ANGLE BLOCKS



- Used for accurate & quick angle setting during Inspection, tool setting & machining.
- Made from special quality alloy steel material.
- Hardness 60 ± 2 Rc

Cat No.	Size (mm)	Angle
UL-30201	75 W x 75 H x 8 T	45° & 90°
UL-30202	50 W x 85 H x 8 T	30° & 60°

24 SERIES UL - 304

"ULTRA" BRAND SUPPORT SCREW JACK



- Used for supporting the job.
- Made from good quality alloy steel material.
- Safe & reliable adjustment of height.
- Locknut for adjustment.
- Can be used with different pads.

Sr. No.	Cat No.	Size (mm)	Range (mm)
1.	UL - 30401	Ø 40	50 - 70
2.	UL - 30402	Ø 50	100 - 150
3.	UL - 30403	Ø 60	150 - 250
4.	UL - 30404 A	Pad Ø 25	-----
5.	UL - 30404 B	Pad Ø 25	-----
6.	UL - 30404 C	Pad Ø 25	-----
7.	UL - 30404 D	Pad Ø 25	-----
8.	UL - 30404 E	Pad Ø 25	-----
9.	UL - 30404 F	Pad Ø 25	-----
10.	UL - 30404 G	Pad Ø 60	-----
11.	UL - 30405 Set	(1+1) Pair Jack- Ø 40 & Ø 50 + Pad A to F - 1 no. each	
12.	UL - 30406 Set	(1+1) Pair Jack- Ø 50 & Ø 60 + Pad A to F - 1 no. each	

25 SERIES UL - 318

"ULTRA" BRAND UNIT VICE



- Hardened and precision ground.
- Multiple Parallel vise for small parts grinding, milling & on VMC M/C.
- Since stoppers are provided, multiple works can be accurately positioned.
- The Jaw can be easily removed from the main body so that sludge cleaning can be easily done.
- Made from high quality alloy steel.
- Hardness 55± 2 Rc.

Cat No.	Pallet Size	Vice Size	Opening
UL - 31806	300 X 400	235 L x 96 W x 96 H	130

26 SERIES UL - 316 "ULTRA" BRAND STAINLESS STEEL EDM VICE



- Made from stainless steel.
- Useful for holding purpose on wire cut machine.
- Suitable for mounting on machine bed.
- Suitable for round job.
- Hardness 55± 3 Rc.
- Accuracy within 15 micron.

Cat No.	Size (mm)	Jaw Opening
UL - 31601	270 L x 25 W x 145 H	0 - 150 mm.
UL - 31602	130 L x 27 W x 90 H	0 - 70 mm.

27 SERIES UL - 828 "ULTRA" BRAND TOOL MAKER VICE (ECONOMY MODEL)



- Produced of high quality steel, carburized to W surface hardness : HRC 58 - 62.
- Parallelism 0.007mm / 100 mm, squareness 0.015 mm.
- Quickly to clamp and easy to operate.
- Used for precision measurement and inspection precision grinding, EDM and wire - cutting machine.

Cat No.	Size (mm)	Jaw Opening (mm)
UL-82801	175 L x 63 W x 63 H	0 - 85
UL-82802	190 L x 73 W x 73 H	0 - 100
UL-82803	235 L x 88 W x 88 H	0 - 125

28 SERIES UL - 310 "ULTRA" BRAND HARDENED AND GROUND PRECISION GRINDING VICE



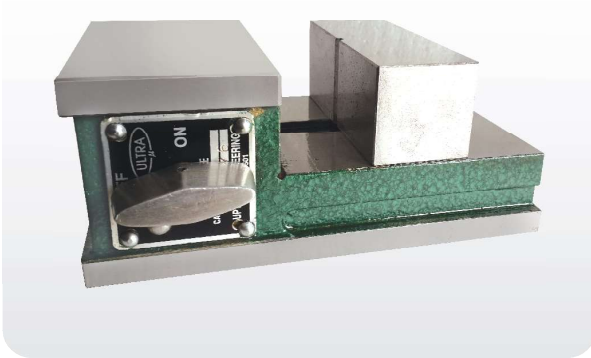
- Used for holding the jobs, spark erosion operation, right angle grinding & Light machining.
- Made from high quality alloy steel.
- Accuracy for Flatness & Parallelism 0.010 mm / 200 L, squareness 0.012 mm.
- Jaw pressure on work piece is forward & downward for repeatable positioning & maximum holding power.
- All sides can be used as reference.
- Hardness 60 ± 2 Rc & Tempered.
- "V" on moveable jaw for better gripping of round jobs.
- **Special size can be manufactured on request.**
- **We also manufacture stainless steel grinding vice.**

Cat No.	Size (mm)	Jaw Opening (mm)
UL-31001	150 L x 48 W x 60 H	0 - 75
UL-31002	180 L x 63 W x 70 H	0 - 90
UL-31003	200 L x 73 W x 80 H	0 - 100
UL-31004	235 L x 96 W x 96 H	0 - 130



29 SERIES UL - 204

"ULTRA" BRAND MAGNETIC VICE

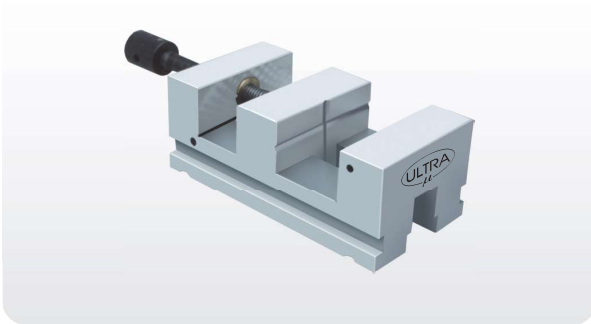


- Used for holding flat squared & round jobs.
- Accuracy for Flatness, Squareness & parallelism within 0.012mm.
- "V" on moveable jaw facilitates end face grinding.
- Job is clamped only by resting between fixed & moveable jaw and operating On-Off switch.
- ON-OFF facility by allen key.

Cat No.	Size (mm)	Jaw-Holding Area (mm ²)
UL-20401	110 x 180 x 75	100 x 65
UL-20402	160 x 225 x 90	150 x 75

30 SERIES UL - 311

**"ULTRA" BRAND HARDENED AND GROUND PRECISION GRINDING VICE
Screw Type**



- Used for holding the jobs, right angle grinding & Light machining.
- Made from high quality alloy steel.
- Accuracy for Flatness & Parallelism within 0.010mm. / 200L and Squareness 0.012 mm.
- Hardness 60 ± 2 Rc & Tempered.
- Wear Plate at bottom to prevent lifting of Jaw
- Clamping screw with square thread & gun metal nut
- Tenon at bottom to allow easy alignment with machine bed
- **Special size can be Manufactured on request.**
- **We also manufacture stainless steel grinding vice.**

Sr. No.	Cat No.	Size (mm)	Jaw Height (mm)	Opening (mm)
1.	UL-31101	150 L x 50 W x 50 H	22	0 - 70
2.	UL-31102	175 L x 60 W x 55 H	28	0 - 80
3.	UL-31103	190 L x 75 W x 65 H	32	0 - 85
4.	UL-31104	210 L x 95 W x 75 H	38	0 -- 100

31 SERIES UL - 829

"ULTRA" BRAND GRINDING VICE SCREW TYPE (ECONOMY MODEL)



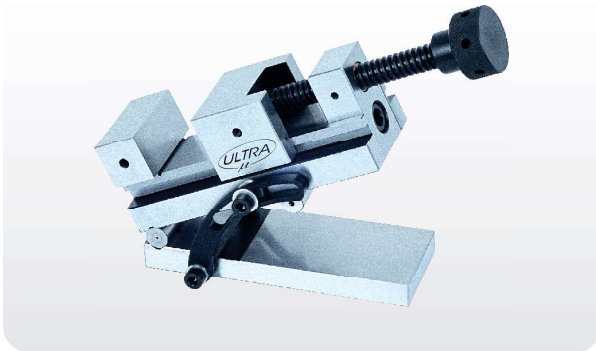
- Produced of high quality steel, carburized to W surface hardness : HRC 58 - 62.
- Parallelism 0.007mm / 100 mm, squareness 0.015 mm.
- Quickly to clamp and easy to operate.
- Used for precision measurement and inspection precision grinding, EDM and wire - cutting machine.
- **Special size can be Manufactured on request.**

Sr. No.	Cat No.	Size (mm)	Opening (mm)	Jaw Height (mm)
1.	UL-82901	155 L x 50 W x 50 H	0 - 65	25
2.	UL-82902	190 L x 63 W x 63 H	0 - 85	32
3.	UL-82903	210 L x 73 W x 73 H	0 - 100	35
4.	UL-82904	250 L x 88 W x 88 H	0 -- 125	40

32 SERIES UL - 312 "ULTRA" BRAND SINE VICE


- Used for Precision measurement, setting of angles, Right angle grinding & light machining.
- Made from high quality alloy steel.
- Accuracy for Squareness, Flatness & Parallelism is 0.010mm / 235 L
- Angular accuracy within ± 5 seconds.
- Centre distance between rollers is within ± 0.005 mm
- Hardness 60 ± 3 Rc

Cat No.	Size (mm)	C.D (mm)	Opening(mm)
UL-31201	190 L x 65 W x 85 H	100	80
UL-31202	235 L x 76 W x 100 H	150	100
UL-31203	265 L x 95 W x 105 H	150	125
UL-31204	290 L x 120 W x 120 H	200	145
UL-31205	310 L x 140 W x 145 H	200	160

33 SERIES UL - 830 "ULTRA" BRAND SINE VICE SCREW TYPE (ECONOMY MODEL)


- Produced of high quality steel, carburized to surface hardness hrc 58 - 62
- Parallelism 0.008mm / 100mm squareness 0.015mm
- Available inspecting angle and processing working with angle.

Cat No.	Size (mm)	C.D (mm)	Opening(mm)
UL-83001	175 L x 63 W x 95 H	100	0 - 85
UL-83002	235 L x 88 W x 125 H	100	0 - 120
UL-83003	285 L x 125 W x 154 H	200	0 - 160

34 SERIES UL - 831 "ULTRA" BRAND TOOL MAKER SINE VICE (ECONOMY MODEL)


- Produced of high quality steel, carburized to surface hardness hrc 58 - 62
- Parallelism 0.008mm / 100mm squareness 0.015mm
- Available inspecting angle and processing working with angle.

Cat No.	Size (mm)	C.D (mm)	Opening(mm)
UL-83101	175 L x 63 W x 93 H	100	0 - 85
UL-83102	190 L x 73 W x 104 H	100	0 - 100
UL-83103	235 L x 88 W x 122 H	100	0 - 125



35 SERIES UL - 313 "ULTRA" BRAND SINE BAR



- Used for Precision measurement, setting of angles.
- Made from high quality alloy steel.
- Accuracy for Parallelism is within 0.005mm upto 200mm & 0.010mm upto 345mm
- Centre distance between rollers is within ± 0.003 mm
- Hardness - 60 ± 2 Rc & Tempered
- Accuracy as per IS Standards IS - 5359 - 1987

Cat No.	Size (mm)	C.D (in mm)
UL-31301	145 L x 20 W x 40 H	100
UL-31302	245 L x 30 W x 40 H	200
UL-31303	345 L x 40 W x 50 H	300

36 SERIES UL - 313 "ULTRA" BRAND MAGNETIC SINE BAR



- Used for Precision measurement, setting of angles.
- Made from high quality alloy steel.
- Accuracy for Flatness & Parallelism is within 0.005mm upto 200mm & 0.010mm upto 350mm
- Centre distance between rollers is within ± 0.003 mm
- Hardness - 60 ± 2 Rc & Tempered.
- Top surface is provided with magnet.

Cat No.	Size (mm)	C.D (in mm)
UL-31304	145 L x 20 W x 40 H	100
UL-31305	245 L x 30 W x 40 H	200
UL-31306	345 L x 40 W x 50 H	300

37 SERIES UL - 401 "ULTRA" BRAND SINE-TABLE (IS : 5939-1970)



- Used for Precision measurement, setting of angles utilizing slip gauge & light machining.
- Ideal for high accuracy grinding operations.
- Accuracy for squareness, Parallelism & flatness is 0.010mm upto 200L & 0.015mm upto 450L.
- Positive locking at all angles without any distortion.
- Angle can be set within ± 5 seconds.
- Centre Distance between rollers is within 0.005mm.
- Made from high quality alloy steel
- Hardness 58 ± 2 Rc & Tempered.
- Firm clamp to reduce possibility of distortion.
- M6 & M8 tapped holes for job clamping.
- Low height for more wheel clearance.
- **Slotted sine table on Request.**
- **Also Manufacture as per customers requirement.**

Sr. No.	Cat No.	Size (mm)	Centre Distance (mm)	Inclination
1.	UL 40101	150 L x 120 W x 65 H	70	0 - 45°
2.	UL 40102	250 L x 150 W x 65 H	100	0 - 45°
3.	UL 40103	300 L x 150 W x 65 H	100	0 - 45°
4.	UL 40104	450 L x 150 W x 65 H	100	0 - 45°

38 SERIES UL - 402
"ULTRA" BRAND COMPOUND SINE-TABLE (IS : 5939 - 1970)

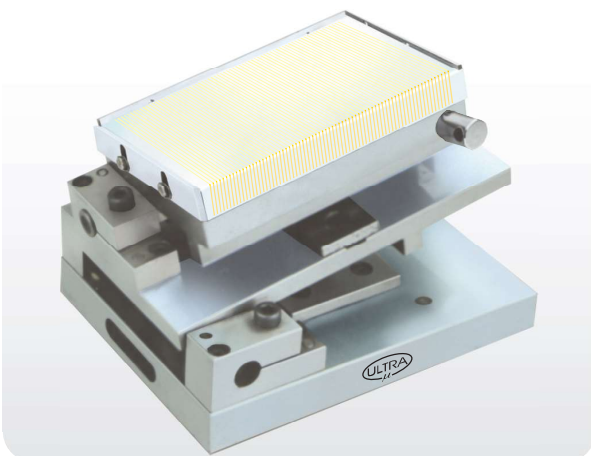

- **Compound Angle facility.**
- Used for Precision measurement, setting of angles & Light machining.
- Accuracy for Square ness, Flatness & Parallelism within 0.010mm upto 200L & 0.015mm upto 450L.
- Angle can be set within ± 5 seconds.
- Centre Distance between rollers is within 0.005mm.
- Made from high quality alloy steel.
- Hardness 60 ± 2 Rc & Tempered.
- Firm hinged clamp to reduce possibility of distortion.
- M6 & M8 tapped holes for job clamping.

Cat No.	Size (mm)	Bottom C.D.	Top C.D.	Inclination
UL 40201	150 L x 120 W x 95 H	100 mm	50 mm	0 - 45°
UL 40202	250 L x 150 W x 95 H	150 mm	100 mm	0 - 45°
UL 40203	300 L x 150 W x 95 H	200 mm	100 mm	0 - 45°
UL 40204	450 L x 150 W x 105 H	300 mm	100 mm	0 - 45°

39 SERIES UL - 403
"ULTRA" BRAND MAGNETIC SINE-TABLE (IS : 5939- 1970)


- Used for Precision measurement, setting of angles & Light machining.
- Accuracy for Square ness, Flatness & Parallelism within 0.010mm upto 200L & 0.015mm upto 450L.
- Angle can be set within ± 5 seconds.
- Centre Distance between roller is within 0.005mm.
- Made from high quality alloy steel
- Hardness 60 ± 2 Rc & Tempered.
- **Magnetic Table for job holding.**
- Firm hinged clamp to reduce possibility of distortion.
- Magnetic Chuck with fine Pitch. (1.5mm)

Cat No.	Size (mm)	Centre Distance	Inclination
UL 40301	150 L x 120 W x 105 H	70 mm	0 - 45°
UL 40302	250 L x 150 W x 105 H	100 mm	0 - 45°
UL 40303	300 L x 150 W x 105 H	100 mm	0 - 45°
UL 40304	450 L x 150 W x 105 H	100 mm	0 - 45°
UL 40305	450 L x 200 W x 105 H	150 mm	0 - 45°

40 SERIES UL - 404
"ULTRA" BRAND MAGNETIC COMPOUND SINE-TABLE (IS : 5939- 1970)


- **Compound Angle facility.**
- Used for Precision measurement, setting of angles & Light machining.
- Accuracy for Square ness, Flatness & Parallelism within 0.010mm upto 200L & 0.015mm upto 450L.
- Angle can be set within ± 5 seconds.
- Centre Distance between rollers is within 0.005mm.
- Made from high quality alloy steel
- Hardness 60 ± 2 Rc & Tempered.
- **Magnetic Table for job holding.**
- Firm hinged clamp to reduce possibility of distortion.
- Magnetic Chuck with fine Pitch. (1.5mm)

Cat No.	Size (mm)	Bottom C.D. (mm)	Top C.D. (mm)	Inclination
UL 40401	150 L x 120 W x 155 H	100	50	0 - 45°
UL 40402	250 L x 150 W x 155 H	150	100	0 - 45°
UL 40403	300 L x 150 W x 155 H	200	100	0 - 45°
UL 40404	450 L x 150 W x 155 H	300	100	0 - 45°
UL 40405	450 L x 200 W x 155 H	250	150	0 - 45°



41 SERIES UL - 501

"ULTRA" BRAND UNIVERSAL SURFACE GAUGE



- Used for marking & transferring measurement.
- Ground base for accurate reference surfaces.
- V groove on the front end which allows the spindle to adjust to any angle above or below the base.
- V groove in the base for cylindrical work.
- A very positive fine adjustment through a rocker arm that makes smooth & accurate setting.
- Grooves on the side of the base for a sure & easy grip.
- Dial indicator can also be used.
- Two gauge pins facilitate easy linear marking.

Cat No.	Size (mm)	Height (mm)
UL-50101	80 L x 65 W x 300 H [12"]	300
UL-50102	100 L x 85 W x 450 H [18"]	450
UL-50103	110 L x 90 W x 600 H [24"]	600

42 SERIES UL - 502

"ULTRA" BRAND HEAVY DUTY SURFACE GAUGE



- Used for marking & transferring measurement.
- Base & scriber are made from hardened steel.
- Robust construction.
- Fine adjustment for smooth & accurate setting.
- Dial indicator can also be used.

Cat No.	Base Size (mm)	Height of Column	Price (Rs.)
UL 50201	130 L x 105 W x 35 H	600 mm	3000 Each
UL 50202	160 L x 130 W x 40 H	1000 mm	4710 Each

43 SERIES UL - 503

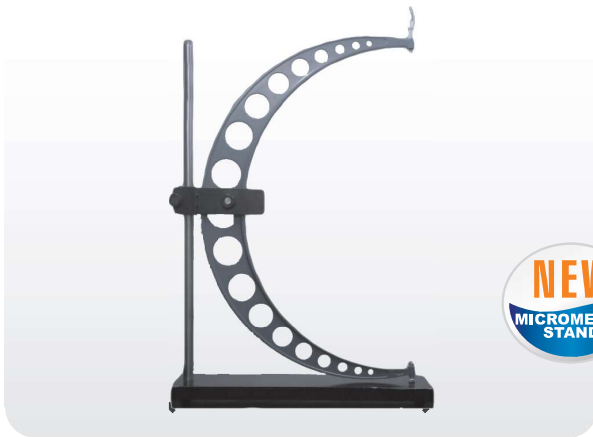
"ULTRA" BRAND HEAVY DUTY DIAL INDICATOR STAND



- Used as holding device for dial indicator.
- Heavy & rigid construction.
- Column can move to & fro to full base length.
- Fine adjustment for accurate setting.
- Both faces of base can be used.

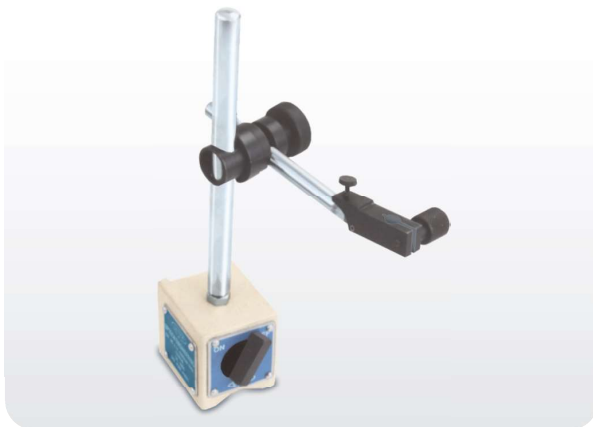
Cat No.	Base Size (mm)	Height of Column (mm)	Max. Horizontal Ext. (mm)
UL 50301	250 L x 45 W	300	350
UL 50302	300 L x 100 W	300	350
UL 50303	300 L x 100 W	500	350
UL 50304	350 L x 100 W	800	350

44 SERIES UL - 838 "ULTRA" BRAND MICROMETER STAND



- Micrometer Range : 300-1000 mm
- Type : Vertical
- Over all Length : 750 mm
- Over all Height : 1015 mm

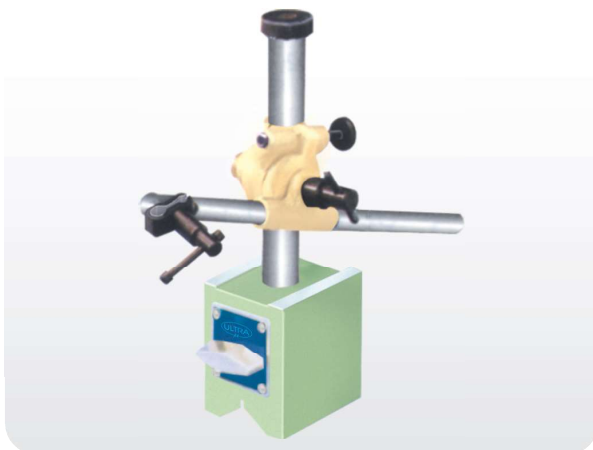
45 SERIES UL - 504 "ULTRA" BRAND MAGNETIC BASE



- Used as holding device for dial indicator
- Base "V" can be clamped to shaft of $\varnothing 20$ to $\varnothing 120$.
- Fine adjustment for accurate settings.
- Powerful magnetic base holds firmly to ferrous surfaces, vertically, horizontally, upside - down.
- ON - OFF facility.

Cat No.	Base Size (mm)	Overall Height (mm)	Pull
UL 50401	60 L x 50 W x 60 H	250	50 kg

46 SERIES UL - 504 "ULTRA" BRAND MAGNETIC BASES



- Used as holding device for dial indicator.
- Heavy & rigid construction.
- Base V can be clamped to shaft of $\varnothing 20$ to $\varnothing 120$
- Fine adjustment for accurate setting.
- Can Hold 8mm & 6mm stem diameter of dial.
- Powerful magnetic base holds firmly to ferrous surfaces - Vertically, horizontally, upside-down.
- ON - OFF facility.

Cat No.	Base Size (mm)	Overall Height	Pull
UL 50403	56 L x 70 W x 70 H	220 mm	70 kg



47 SERIES UL - 504

"ULTRA" BRAND MAGNETIC BASES



- Used as holding device for dial indicator.
- Heavy & rigid construction.
- Base V can be clamped to shaft of Ø 20 to Ø 120
- Fine adjustment for accurate setting.
- Can hold 8mm & 6mm stem diameter of dial.
- Two extension arms gives more flexibility in inspection.

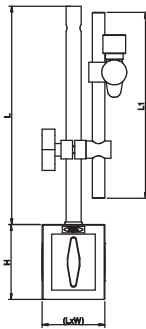
Cat No.	Base Size (mm)	Overall Height	Main Shaft	Pull
UL 50405	70 L x 48 W x 64 H	275 mm	Ø18 x 210 mm	70 kg

48 SERIES UL - 504

"ULTRA" BRAND MAGNETIC BASES



UL 50411



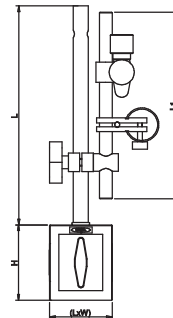
- Used as holding device for dial indicator.
- Base V can be clamped to shaft of Ø20 to Ø120 .
- Strong magnetic field, so it can be clamped to any part vertically & horizontally.
- ON-OFF facility.

49 SERIES UL - 504

"ULTRA" BRAND MAGNETIC BASES WITH FINE ADJUSTMENT



UL 50412

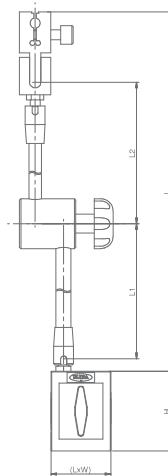
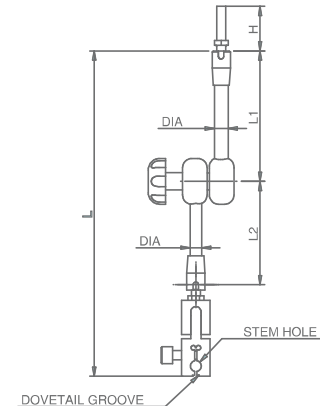


- Used as a holding device for dial indicator.
- Heavy & rigid construction of base & column.
- Base V can be clamped to shaft.
- Fine adjustment for accurate setting.
- ON - OFF facility.

Series Code	Size (LxWxH) (mm/inch)	Overall Height (mm)	Pull Force (kgf)	Holding Stem	Remark
UL-50411	60X50X60mm (1,38X1,18X1,38")	230mm (9.05")	55	DIA0.31", Ø8mm	Without Fine Adjustment
UL-50412	60X50X60mm (1,38X1,18X1,38")	230mm (9.05")	55	DIA0.31", Ø8mm	With Fine Adjustment

50 SERIES UL - 504
"ULTRA" BRAND UNIVERSAL CLAMPING MAGNETIC BASE with fine adjustment


- Can be locked to any position in 360° by a Central lock.
- Used as a holding device for dial indicator.
- Heavy & rigid construction of base & column.
- Center Knob is of metal for extra life.
- Dovetail slot for lever type dial.
- Fine adjustment for accurate setting.
- Base V can be clamped to shaft of Ø20 to Ø120.
- Can Hold 8mm (6mm with sleeve) stem diameter of dial.


51 SERIES UL - 504
"ULTRA" BRAND CENTRICATOR


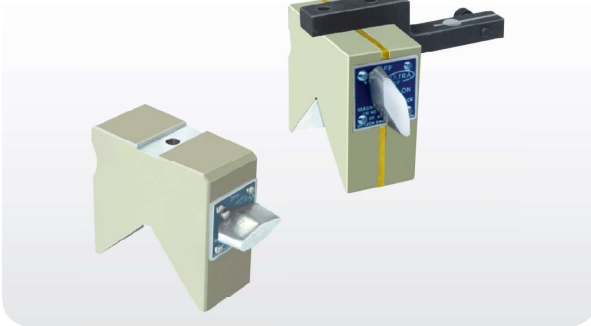
Series Code	Magnetic Base Size (LxWxH)	ARM Length L	L1	L2	Overall Height (H+L)	Pulling Force (kgf)	Holding Stem	Remark
UL 50413	70X48X64mm (2.75X1.89X2.52")	291 mm 11.45"	110 mm 4.33"	101 mm 3.97"	355 mm 13.97"	70 mm	DIA 8 mm (0.31")	With Fine Adjustment & Dovetail Groove
UL 50415	60X50X60mm (2.36X1.97X2.36")	290 mm 11.42"	110 mm 4.33"	101 mm 3.97"	350 mm 13.77"	50 mm	DIA 8 mm (0.31")	With Fine Adjustment & Dovetail Groove
UL 50416	70X48X64mm (2.75X1.89X2.52")	345 mm 13.58"	132 mm 5.19"	120 mm 4.72"	409 mm 16.10"	70 mm	DIA 8 mm (0.31")	With Fine Adjustment & Dovetail Groove
UL 50417	35X30X35mm (1.38X1.18X1.38")	175 mm 6.89"	56 mm 2.20"	51 mm 2.00"	210 mm 8.26"	28 mm	DIA 8 mm (0.31")	With Fine Adjustment & Dovetail Groove

Series Code	ARM Length L	L1	L2	Overall Height (H+L)	Holding Stem	Remark
UL 50418	290 mm 11.42"	110 mm 4.33"	101 mm 3.97"	350 mm 13.77"	DIA 8 mm (0.31")	With Fine Adjustment & Dovetail Groove
UL 50419	175 mm 6.89"	56 mm 2.20"	51 mm 2.00"	235 mm 9.25"	DIA 8 mm (0.31")	With Fine Adjustment & Dovetail Groove



52 SERIES UL - 505

"ULTRA" BRAND MAGNETIC TOOL SETTING GAUGE

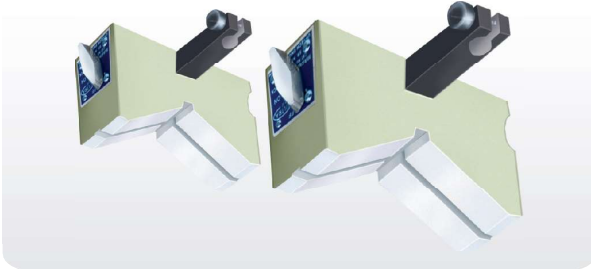


- Used with boring bar for presetting of the cutting tool.
- Change in the setting of the tool measures variation in bore dimension.
- Suitable clamp is provided for holding dial indicator (for UL - 50504 & UL - 50505)
- Powerful magnet with ON-OFF facility.
- "V" is hardened & ground within 5 microns.
- The included angle of V is 90°.
- Hardness 52 - 56 Rc.
- Also manufactured as per customer's requirement.

Sr. No.	Cat No.	Size (mm)	Slot (mm)	Range (mm)
1.	UL-50501	72 L x 68 H x 35 T	14 x 2	Ø 25 - Ø 70
2.	UL-50502	76 L x 75 H x 35 T	14 x 2	Ø 35 - Ø 90
3.	UL-50503	80 L x 75 H x 40 T	14 x 2	Ø 40 - Ø 105
4.	UL-50504	100 L x 85 H x 40 T	14 x 2	Ø 40 - Ø 125
5.	UL-50505	120 L x 90 H x 40 T	14 x 2	Ø 110 - Ø 180

53 SERIES UL - 505

"ULTRA" BRAND MAGNETIC TOOL SETTING GAUGE

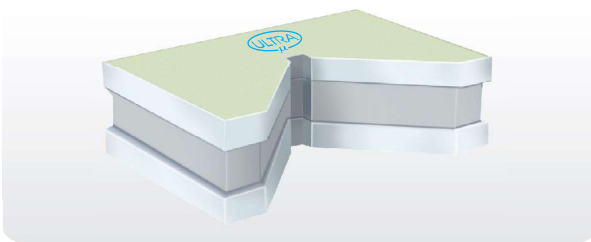


- Used with boring bar for presetting of cutting tool.
- Change in the setting of the tool measures variation in bore dimension.
- Suitable clamp is provided for holding dial indicator.
- Powerful magnet with ON-OFF facility.
- "V" is hardened & ground within 5 microns.
- The included angle of V is 120°.
- Hardness 52 - 56 Rc.
- Also manufactured as per customer's requirement.

Sr. No.	Cat No.	Base Size (mm)	Range (mm)
1.	UL 50506	60 L x 60 H x 30 T	Ø 10 - Ø 50
2.	UL 50507	80 L x 80 H x 30 T	Ø 10 - Ø 90
3.	UL 50508	100 L x 100 H x 35 T	Ø 10 - Ø 110

54 SERIES UL - 506

"ULTRA" BRAND MAGNETIC TOOL SETTING GAUGE



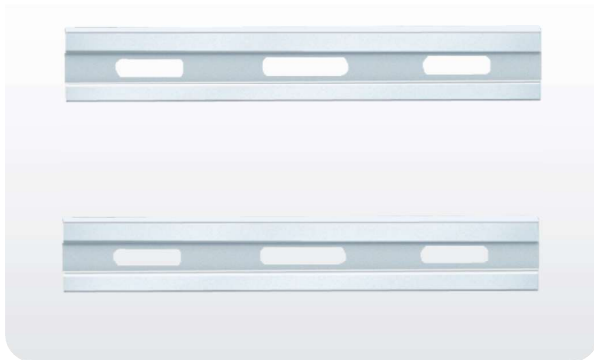
- Used with boring bar for presetting of cutting tool
- Change in setting of the tool measures variation in bore dimension.
- Powerful magnet without ON-OFF facility.
- "V" is hardened & ground within 5 micron.
- The included angle of V is 120°.
- Hardness 52 - 56 Rc.
- Also manufactured as per customer's requirement.

Sr. No.	Cat No.	Size (mm)	Range (mm)
1.	UL 50601	100 L x 50 H x 25 T	Ø 20 - Ø 90
2.	UL 50602	110 L x 45 H x 22 T	Ø 20 - Ø 75
3.	UL 50603	90 L x 40 H x 22 T	Ø 45 - Ø 100

55 SERIES UL - 601
"ULTRA" BRAND HARDENED & GROUND KNIFE-EDGE STRAIGHT EDGE

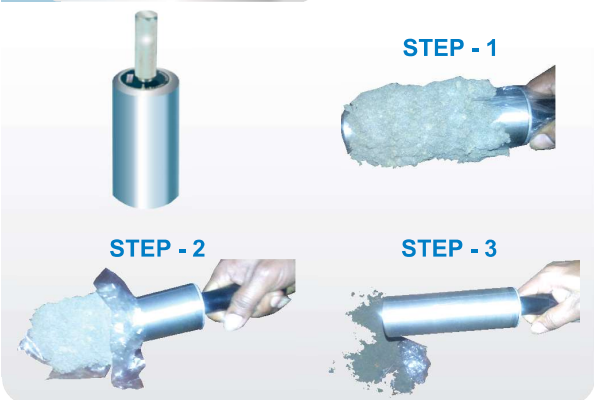

- Used for checking flatness & straightness of surfaces.
- All accuracies as per IS : 3512 - 1966.
- Made from high quality tool steel.
- Knife edge provides an excellent visual line contact with the work piece.
- Hardness 60 ± 2 Rc.
- Packed in individual wooden box.

Sr. No.	Cat No.	Size (mm)
1.	UL-60101	50L x 30W x 8T [2"]
2.	UL-60102	75L x 35W x 8T [3"]
3.	UL-60103	100L x 40W x 10T [4"]
4.	UL-60104	150L x 40W x 10T [6"]
5.	UL-60105	200L x 50W x 12T [8"]
6.	UL-60106	250L x 50W x 12T [10"]
7.	UL-60107	300L x 60W x 12T [12"]
8.	UL-60108	500L x 50W x 15T [20"]
9.	UL-60109	600L x 60W x 20T [24"]

56 SERIES UL - 602
"ULTRA" BRAND HARDENED & GROUND STEEL STRAIGHT EDGE (IS : 2220 - 1990)


- Used for checking flatness & straightness of surfaces.
- Made from high quality tool steel.
- Hardness 60 ± 2 Rc.
- Plastic head insulator.
- Packed in individual wooden box.

Sr. No.	Cat No.	Size (mm)	Accuracy Micron
1.	UL-60201	100 L x 15 H x 5 T [4"]	6
2.	UL-60202	160 L x 20 H x 8 T [6"]	6
3.	UL-60203	300 L x 35 H x 12 T [12"]	7
4.	UL-60204	500 L x 50 H x 15 T [20"]	7
5.	UL-60205	800 L x 80 H x 20 T [32"]	10
6.	UL-60206	1000 L x 100 H x 20 T [40"]	12
7.	UL-60207	1500 L x 100 H x 20 T [60"]	18

57 SERIES UL - 701
"ULTRA" BRAND MAGNETIC SEPARATOR


- Used for **removing** or collecting fine ferrous or ferromagnetic contaminants from **oil tank or coolant tank**.
- Powerful magnet allows large collection of particles.
- Stainless steel body for rust prevention.
- Handle or eye bolt on top for easy handling.
- Available in different diameters & lengths.

Cat No.	Dia (inch.)	Length (inch.)
UL - 70101	1"	4, 5, 6, 7, 8
UL - 70102	2"	6, 8, 10, 12, 14
UL - 70103	4"	6, 8, 10, 12, 16
UL - 70104	6"	8, 16, 24, 30, 36



58 SERIES UL - 603

"ULTRA" BRAND HARDENED & GROUND TRY - SQUARE. Flat Edge Without Stock.



- Used for checking Squareness & Straightness.
- All accuracies as per IS : 2103 - 1980.
- Made from single piece high quality tool steel.
- Hardness 60 ± 2 Rc.
- A groove on the inner corner of the stock, aids in the clearance of burr or dirt.
- Packed in individual wooden box.

Sr. No.	Cat No.	Size (mm)
1.	UL - 60301	50 L x 35 H x 4 T [2"]
2.	UL - 60302	75 L x 50 H x 4.5 T [3"]
3.	UL - 60303	100 L x 70 H x 5 T [4"]
4.	UL - 60304	150 L x 100 H x 6 T [6"]
5.	UL - 60305	200 L x 140 H x 7 T [8"]
6.	UL - 60306	250 L x 165 H x 8 T [10"]
7.	UL - 60307	300 L x 200 H x 8 T [12"]
8.	UL - 60308	400 L x 250 H x 10 T [16"]

59 SERIES UL - 604

"ULTRA" BRAND HARDENED & GROUND BEVELLED EDGE TRY - SQUARE



- Used for checking Squareness & Straightness.
- All accuracies as per IS : 2103 - 1980.
- Made from single piece high quality tool steel.
- Inner & outer edges of blade are bevelled at 60° angle.
- Beveled edge provides an excellent visual line contact with the workpiece.
- Hardness 60 ± 2 Rc.
- A groove on the inner corner of the stock, aids in the clearance of burr or dirt.
- Packed in individual wooden box.

Sr. No.	Cat No.	Size (mm)
1.	UL - 60401	50 L x 35 W x 4 T [2"]
2.	UL - 60402	75 L x 50 W x 4.5 T [3"]
3.	UL - 60403	100 L x 70 W x 5 T [4"]
4.	UL - 60404	150 L x 100 W x 6 T [6"]
5.	UL - 60405	200 L x 140 W x 7 T [8"]
6.	UL - 60406	250 L x 165 W x 8 T [10"]
7.	UL - 60407	300 L x 200 W x 8 T [12"]
8.	UL - 60408	400 L x 250 W x 10 T [16"]

60 SERIES UL - 605

"ULTRA" BRAND HARDENED & GROUND WITH STOCK TRY - SQUARE



- Used for checking Squareness & Straightness.
- All accuracies as per IS : 2103 - 1980.
- Made from single piece high quality tool steel Single Piece Construction upto 400L above that two piece Construction.
- Hardness 60 ± 2 Rc.
- A groove on the inner corner of the stock.
- Packed in individual wooden box.

Sr. No.	Cat No.	Size (mm)
1.	UL - 60501	100 L x 70 W x 10 T [4"]
2.	UL - 60502	150 L x 100 W x 12 T [6"]
3.	UL - 60503	200 L x 140 W x 15 T [8"]
4.	UL - 60504	250 L x 165 W x 20 T [10"]
5.	UL - 60505	300 L x 200 W x 20 T [12"]
6.	UL - 60506	400 L x 250 W x 25 T [16"]
7.	UL - 60507	500 L x 300 W x 25 T [20"]
8.	UL - 60508	750 L x 500 W x 30 T [30"]
9.	UL - 60509	1000 L x 750 W x 40 T [40"]

61 SERIES UL - 606
"ULTRA" BRAND HARDENED & GROUND FLANGED BEAM TRY - SQUARE


- Used to check Squareness & Straightness.
- Accuracy for Squareness & Flatness is within 0.010 mm / 150 H.
- Made from single piece high quality tool steel.
- Inside & outside are accurate right angles.
- A groove on the inner corner of the stock, aids in the clearance of burr or dirt.
- Hardness 60 ± 2 Rc.
- Packed in individual wooden box.

Cat No.	Beam Size (mm)	Cross Section (mm2)
UL - 60601	100 x 70	20 x 5
UL - 60602	150 x 100	26 x 6
UL - 60603	200 x 130	32 x 7
UL - 60604	300 x 200	40 x 8

62 SERIES UL - 607
"ULTRA" BRAND MAGNETIC TRY SQUARE

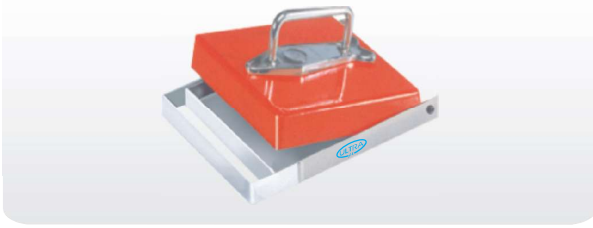

- Used to check Squareness & Straightness.
- Made from high quality tool steel
- Beam & blade are perfectly at right angle within 10 microns.
- Powerful magnet with ON-OFF facility.
- Packed in individual box.

Cat No.	Size (mm)
UL-60701	200 L x 50 W x 60 H

63 SERIES UL - 811
"ULTRA" BRAND TRY SQUARE PERMANENT MAGNETIC


- Aluminium body with Fixed right angle.
- Keeps hands free during welding of two sheets.
- Suitable for right angle.
- To used in fabrication & welding.
- Used in Machine shop for marking inspection or welding

Cat No.	Size (mm)
UL-81101	130 L x 37 W x 130 H
UL-81102	150 L x 50 W x 150 H
UL-81103	160 L x 50 W x 160 H
UL-81104	200 L x 50 W x 200 H

**64 SERIES UL - 208****"ULTRA" BRAND PLATE TYPE MAGNETIC SEPARATOR**

- Used for lifting & handling of ferromagnetic particles.
- Strong magnetic field to lift large quantity of particles.
- Particles are detached by separating lower plate form upper magnetic body.

Cat No.	Size (mm)
UL- 20801	125L x 175W x 30H

65 SERIES UL - 209**"ULTRA" BRAND PERMANENT MAGNETIC SWEEPER**

- Used for collecting ferrous particles & scrap from floor space.
- Good quality strong magnets are used.
- Wheels for easy movement on floor.
- Particles are released just by creating gap between bottom plate & magnetic assembly by using foot.
- Long handle for easy working.
- **Also Available in Steel Wheel.**

Cat No.	Size (mm)
UL - 20901	300 x 150
UL - 20902	450 x 150
UL - 20903	600 x 150

66 SERIES UL - 812**"ULTRA" BRAND MAGNETIC SWEEPER FORKLIFT OPERATED**

- Used for lifting & handling of ferromagnetic particles.
- Strong magnetic field to lift large quantity of particles.
- Particles are detached by separating lower plate form upper magnetic body.
- Magnetic Sweeper can fit to any forklift.

Cat No.	Size (mm)
UL - 81201	800 x 260
UL - 81202	1000 x 260
UL - 81203	1200 x 260

67 SERIES UL - 832**"ULTRA" BRAND MAGNETIC TELESCOPIC TORCH**

- Used for removing ferrous chips or particles from blind or tapping holes, corners or slots of machine table.
- Compact design, uses strong magnets.
- LED Light provided at one end.

Sr. No.	Cat No.	Size (mm)
1.	UL-83201	Ø 20 x 175 L -540mmL

68 SERIES **UL - 813**

"ULTRA" BRAND MAGNETIC SEPARATOR ON OFF TYPE



STEP - I



STEP - II



STEP - III

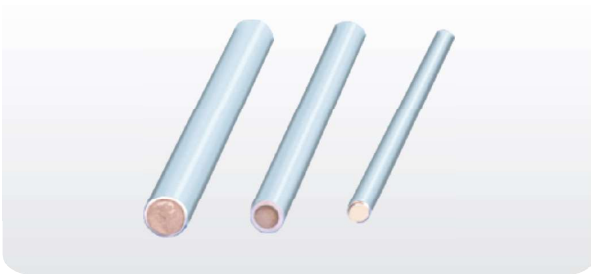


- Easily Clean up sharp edged drill chips screw and other metal parts.
- Items are safely ejected by Pulling the back side knob.
- Ideal for hard to reach space.
- Used in all fabrication shop and machine shop.
- No requirement of hand contact with scrap to handle, so safe in use.

Sr. No.	Cat No.	Size
1.	UL-81301	Ø 1 x 6 Inch

69 SERIES **UL - 203**

"ULTRA" BRAND MAGNETIC STICKS



- Used for removing ferrous chips or particles from blind or tapping holes, corners or slots of machine table.
- Compact design, uses strong magnets. Magnet depth is 20mm from one end.
- Stainless steel body to avoid corrosion. Special sizes can also be manufactured.
- Magnetic stick with handle is also available.

Sr. No.	Cat No.	Size (mm)
1.	UL-20301	Ø 3 x 150 L
2.	UL-20302	Ø 5 x 150 L
3.	UL-20303	Ø 6 x 150 L
4.	UL-20304	Ø 8 x 150 L
5.	UL-20305	Ø 10 x 150 L

Sr. No.	Cat No.	Size (mm)
6.	UL-20306	Ø 12 x 150 L
7.	UL-20307	Ø 14 x 150 L
8.	UL-20308	Ø 15 x 150 L
9.	UL-20309	Ø 16 x 150 L
10.	UL-20310	Ø 18 x 150 L

70 SERIES **UL - 833**

"ULTRA" BRAND MAGNETIC TELESCOPIC PEN



- Used for removing ferrous chips or particles from blind or tapping holes, corners or slots of machine table.
- Compact design, uses strong magnets.

Sr. No.	Cat No.	Size (mm)
1.	UL-83301	Ø 6 X 130L - 640mm



71 SERIES UL - 613

"ULTRA" BRAND MAGNETIC DIAMOND DRESSER HOLDER (WITHOUT DRESSER)



- Small & compact size
- Powerful holding of the magnet on the machine table.
- Easy holding of the diamond dresser.

Cat No.	Size (mm)	Magnetic Pull
UL-61301	70 L x 48 W x 64 H	70 Kg.

72 SERIES UL - 614

"ULTRA" BRAND DIAMOND DRESSER HOLDER



- Small & compact size
- Easy holding of the diamond dresser.
- To be used on grinding machine with magnetic chuck.
- Hardened & ground.

Cat No.	Size (mm)
UL-61401	70 L x 70 W x 50 H

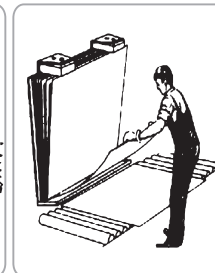
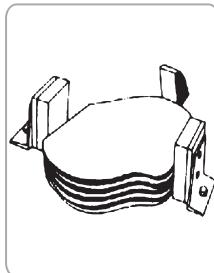
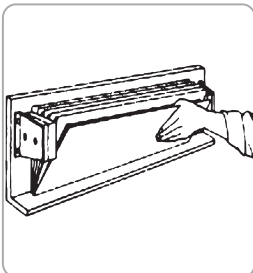
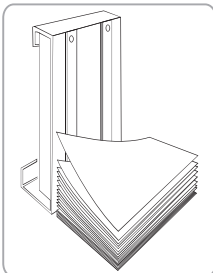
73 SERIES UL - 707

"ULTRA" BRAND MAGNETIC SHEET SEPARATOR (FLOATER)

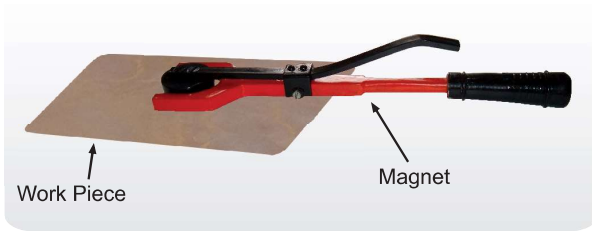


- Used for creating gap between thin sheets & thus, removing sheets one by one easily from stacks.
- They induce similar pole force to each plate in a stack, there by creating repelling forces in consecutive plates, causing for separation.
- Can separate oil stuck sheets or heavily piled-up sheets with less efforts & less time.
- Any size & shape of sheets can be separated by using number of floaters at certain interval.
- Compact design with strong magnetic field.
- Can be attached to machine or tighten to table.
- For better results - used in pair.

Cat No.	Size (mm)
UL - 70701	75 L x 90 H x 50 T
UL - 70702	115 L x 135 H x 55 T
UL - 70703	150 L x 270 H x 65 T



74 SERIES **UL - 806** "ULTRA" BRAND SHEET METAL LIFTER



- Used for lifting & handling of steel sheets & blanks from stacks & press machine.
- Convenient, easy for loading & unloading of sheets.
- Light weight & easy to use.

Cat No.	Size (mm)	Lift Capacity	Weight
UL-80604	70W X 20H X 400L	2 (Kgs)	0.8 (Kgs)
UL-80605	40W X 10H X 400L	0.5 (Kgs)	0.5 (Kgs)

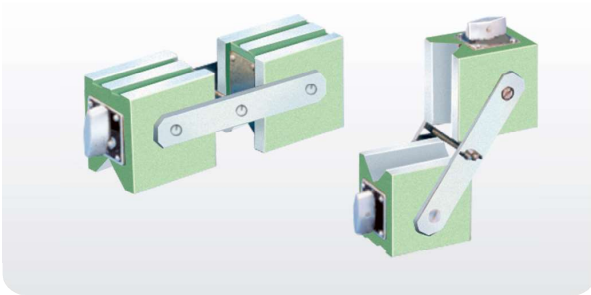
75 SERIES **UL - 702** "ULTRA" BRAND MAGNETIC ADJUSTABLE LINK



- A twin magnetic unit possessing a **multi angle setting for Welding**.
- It can be quickly locked at any angle by turning of wing nut, thus providing the simplest & most rapid means of clamping together.
- When Connected in series, complex arrangement is possible for holding sheets & strips.

Cat No.	Size (mm)	Length (mm)	Magnetic Pull on each block
UL - 70201	50 x 25 x 25	125	15 kg

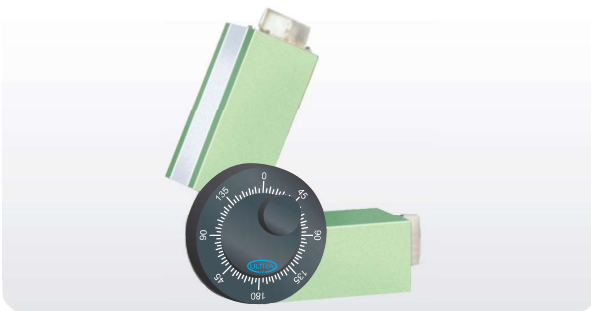
76 SERIES **UL - 703** "ULTRA" BRAND MAGNETIC POSITIONER



- Used to **clamp or set steel parts or sheets at different positions**.
- Two magnetic housing connected laterally by a pair of side strips.
- Magnetic housings can be positioned by tightening a wing nut.
- Hold flat as well as round jobs.
- Strong magnetic power with ON - OFF facility.

Cat No.	Size (mm)	Overall Length	Magnetic Pull
UL - 70301	70 x 48 x 64	220 mm	75 kg

77 SERIES **UL - 704** "ULTRA" BRAND MAGNETIC ANGLE SETTER



- Used to **clamp or set steel parts or sheets at different positions**.
- Magnetic blocks can be positioned by tightening a locking nut.
- Round Dial indicates Angular positioning.
- Hold flat as well as round jobs.
- Strong magnetic power with ON - OFF facility.

Cat No.	Size (mm)
UL - 70401	190 L x 50 W x 55 H
UL - 70402	275 L x 50 W x 55 H
UL - 70403	166 L x 50 W x 55 H



78 SERIES UL - 826

"ULTRA" BRAND ELECTRO MAGNETIC HOLDER



Used in Automated manufacturing lines as the magnetic force can be turned on & off or increased or decreased by remote operation via a rectifier or PLC.

Features -

- Electrical Control can be used for turning on & off the magnetic force.
- Usable for continuous operation.
- Quick Attach & Detach enables speedy automation.

Applications -

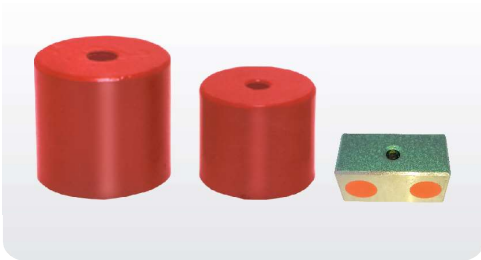
- Automated press.
- Prevention of deflection for shearing material.
- Various automatic processes.
- Holding Hands of Industrial robots.
- In Machine shop, Press Shop, Assembly Line Material Feed.

Special Sizes Available on Request as per Application.

Sr. No.	Cat No.	Size (mm)	Max Holding Power	Working Voltage
1.	UL - 82601	Ø 30 x 40 H	3kg	24 DC
2.	UL - 82602	Ø 30 x 25 H	2kg	24 DC
3.	UL - 82603	Ø 35 x 30 H	8kg	24 DC
4.	UL - 82604	Ø 30 x 45 H	15kg	24 DC
5.	UL - 82605	Ø 40 x 45 H	35kg	24 DC
6.	UL - 82606	Ø 50 x 30 H	40kg	24 DC

79 SERIES UL - 205

"ULTRA" BRAND POT MAGNET



- Used for lifting holding & locating of ferrous parts.
- Compact design with very strong magnetic pull.
- Tapped hole on rear of magnetic face for lifting arrangement.

Cat No.	Size (mm)	Tapping	Pull
UL-20501	Ø 18 x 16 H	M6	3 kg
UL-20502	Ø 22 x 20 H	M6	5 kg
UL-20503	Ø 27 x 25 H	M8	6 kg
UL-20504	Ø 35 x 30 H	M8	10 kg
UL-20505	50 x 25 x 25 H	M8	3 kg
UL-20506	70 x 25 x 25 H	M8	5 kg

80 SERIES UL - 206

"ULTRA" BRAND BUTTON MAGNET



- Used for lifting holding & locating of ferrous parts.
- Compact design with strong magnetic pull.

Cat No.	Size (mm)	Pull
UL-20601	Ø 12 x 10 H	1 kg
UL-20602	Ø 20 x 12 H	4 kg
UL-20603	Ø 25 x 15 H	5 kg

81 SERIES UL - 207

"ULTRA" BRAND MAGNETIC HOLDFAST



- Used for lifting holding & locating of ferrous parts.
- The Jack-off screw also serves as a handle.
- Eye bolt for lifting.

Cat No.	Size (mm)	Pull
UL-20701	Ø 45 x 45 H	30 kg
UL-20702	Ø 55 x 50 H	40 kg
UL-20703	Ø 70 x 65 H	50 kg
UL-20704	Ø 100 x 75 H	65 kg

82 SERIES UL - 823
**"ULTRA" BRAND RECTANGULAR HOLDING MAGNETS
With Electrical Switch Off**

FEATURES -

1. The Permanent magnet system of these holding magnets creates a magnetic field between the centre pole and the outer border of the holding surface.
2. In addition to the permanent magnet, which creates the holding force, a coil is installed. When 24V= is applied to this switch - off coil a counter pole magnetic field is set up to neutralize the permanent magnetic field. As a result work - pieces can easily be removed.
3. These holding magnets will preferably be used when long - term holding times are required and tools should be loosened by switching on the coil for a short period.

Special Sizes Available on Request as per Application.

Sr. No.	Cat No.	Holding Surface	Holding Force	Weight	Minimum Thickness
1	UL - 82301	200 mm x 60 mm	150 kg	3.0 kg	6 mm
2	"ULTRA" CONTROL UNIT FOR ABOVE				

83 SERIES UL - 822
**"ULTRA" BRAND ROUND PERMANENT ELECTRIC HOLDING MAGNETS
With Electrical Switch Off**


Suitable for pick and place application

FEATURES -

1. The Permanent magnet system of these holding magnets creates a magnetic field between the centre pole and the outer border of the holding surface.
2. In addition to the permanent magnet, which creates the holding force, a coil is installed. When 24V= is applied to this switch - off coil a counter pole magnetic field is set up to neutralize the permanent magnetic field. As a result work - pieces can easily be removed.
3. These holding magnets will preferably be used when long - term holding times are required and tools should be loosened by switching on the coil for a short period.

Special Sizes Available on Request as per Application.

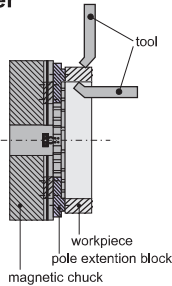
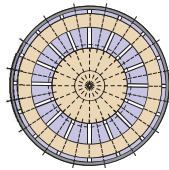
Sr. No.	Cat No.	Holding Surface	Holding Force	Minimum Thickness
1.	UL - 82203	Ø 64mm	50 kg	4.5 mm
2.	UL - 82204	Ø 70mm	55 kg	6.0 mm
3.	UL - 82205	Ø 90mm	100 kg	7.5 mm
4.	UL - 82206	Ø 120mm	150 kg	7.5 mm
"ULTRA" CONTROL UNIT FOR ABOVE				



84 SERIES UL - 821

“ULTRA” BRAND ELECTROPERM MAGNETIC ROUND CHUCK FOR TURNING

Continues Power Not Required.



APPLICATION-

1. Use in vertical and horizontal turning of Plates.
2. Radially movable location blocks will help to position and secure work pieces. For Heavy Turning
3. Double magnet is available for heavy duty operations on seamless rolled rings, turning flanges and machining plates.
4. **Continues electrical power supply is not required.**

ID, OD and face machining in one setup

FEATURE -

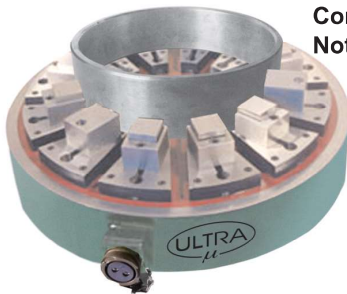
1. ID, OD & Face Machining In One Setup which no other work-holder will provide.
2. Detachable Bayonet Plug for power supply.
3. Poles Individually Magnetized for full loading power. Also Simple Pole Extensions allows tool clearance for rings.
4. Assembled with power full magnets. So heavy cuts can be taken. Setup is easy & downtime for different work pieces will be minimal.
5. Clamp force is consistent & predictable. Work holder does not distort the work piece.
7. Undamping is on the tip of a button, which increases productivity.
8. No Heat is generated by integrating coil when magnet is activated, as power supply is disconnected during machining being Electro Perm Magnetism.
9. Full Machining Capacity can be Exploited with better tolerances & repeatability.

Sr. No.	Cat No.	Size (mm)
1.	UL - 82101	Ø 300 x 100 H
2.	UL - 82102	Ø 450 x 100 H
3.	UL - 82103	Ø 500 x 100 H
4.	UL - 82104	Ø 600 x 100 H
5.	UL - 82105	Ø 800 x 100 H
6.	UL - 82106	Ø 1000 x 100 H
7.	UL - 82107	Ø 1250 x 100 H
8.	“ULTRA” VARIABLE CONTROL UNIT FOR ABOVE CHUCKS	
9.	“ULTRA” EXTENSION BLOCK	
10.	“ULTRA” EXTENSION JAWS (Movebal)	

85 SERIES UL - 815

“ULTRA” BRAND ELECTROPERM MAGNETIC ROUND CHUCK FOR GRINDING

Continues Power Not Required.



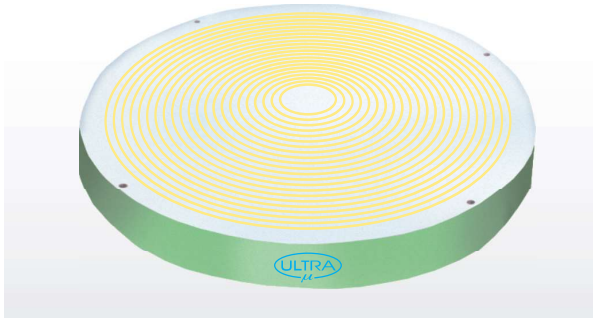
FEATURE -

1. Continuous Electricity is not required. 100% safe in used.
2. Power for all poles transferred to ring / plates to hold the job firmly.
3. Assembled with power full magnets. So heavy cut can taken
4. Poles individually magnetized for full loading power

APPLICATION -

1. Use in vertical and horizontals grinding Machine.
2. Radially movable location blocks will help to position and secure work pieces. This is also necessary for wheel clearance .

Sr. No.	Cat No.	Size (mm)
1.	UL - 81501	Ø 300 x 100 H
2.	UL - 81502	Ø 450 x 100 H
3.	UL - 81503	Ø 500 x 100 H
4.	UL - 81504	Ø 600 x 100 H
5.	UL - 81505	Ø 800 x 100 H
6.	UL - 81506	Ø 1000 x 100 H
7.	UL - 81507	Ø 1250 x 115 H
	“ULTRA” VARIABLE CONTROL UNIT FOR ABOVE CHUCKS	
	“ULTRA” EXTENSION BLOCK	
	“ULTRA” EXTENSION JAWS (Movebal)	
		ON REQUEST

86 SERIES UL - 716
**"ULTRA" BRAND ELECTRO MAGNETIC ROUND CHUCK
IS : 8710 - 1978**


- Work holding device for Rotary surface grinding machine & lathe machines.
- Each pole is having separate coil, as such very strong & even magnetic flux is generated.
- **Magnetic pull is 30-50% more than IS specification.**
- Mag - D - Mag with variable control unit allows to neutralize the residual magnetism precisely, using a microprocessor based control circuitry.
- Variable supply for varying power which helps in alignment & removing of warpages of thin jobs.
- The chuck is also useful for second operation
- Chuck is tested for Slipping force, Waterproof test,
- Temperature rise test, Electrical & Demagnetizing tests.

Sr. No.	Cat No.	Size (mm)	Circular Pole Gap (mm)
1.	UL - 71601	Ø 300 x 100 H	10 + 5
2.	UL - 71602	Ø 450 x 100 H	10 + 5
3.	UL - 71603	Ø 600 x 100 H	10 + 5
4.	UL - 71604	Ø 750 x 100 H	10 + 5
5.	UL - 71605	Ø 1000 x 100 H	10 + 5
5A	"ULTRA" MAG D-MAG WITH VARIABLE CONTROL UNIT		2Amp.
5B	"ULTRA" MAG D-MAG WITH VARIABLE CONTROL UNIT		2Amp. & above

87 SERIES UL - 837
"ULTRA" BRAND PERMANENT MAGNETIC CHUCK (THROUGH POLE)

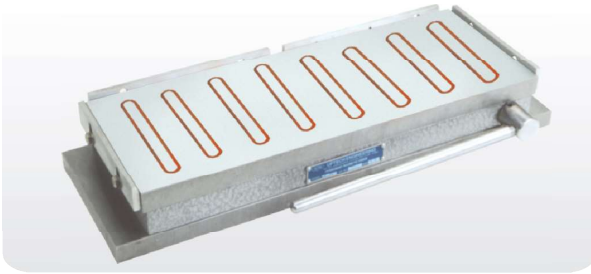

- Permanent Magnetic chuck (through pole)
- Holding Device for surface grinding machine, Tool & Cutter Grinder, Spark Erosion
- Machines & also for light milling.
- The working face & bottom face are perfectly parallel.
- Assembled with powerful magnets.
- Poles individually magnetized for full loading power.
- Magnetic Pull is 40 – 50% more than IS Specification.
- Better magnetic grip due to close poles.
- Suitable to hold thin & small jobs.
- Easy operated ON – OFF Lever.

Code No.	Size	Pole pitch
UL – 83701	300L x 150W	9 mm
UL – 83702	450L x 150W	9 mm
UL – 83703	300L x 200W	9 mm
UL – 83704	450L x 200W	9 mm
UL – 83705	500L x 200W	9 mm
UL – 83706	600L x 200W	9 mm
UL – 83707	450L x 250W	11 mm
UL – 83708	500L x 250W	11 mm
UL – 83709	600L x 250W	11 mm
UL – 83710	450L x 300W	11 mm
UL – 83711	600L x 300W	11 mm
UL – 83712	750L x 250W	11 mm
UL – 83713	750L x 300W	11 mm



88 SERIES UL - 708

"ULTRA" BRAND PERMANENT MAGNETIC CHUCK (HEAVY DUTY)

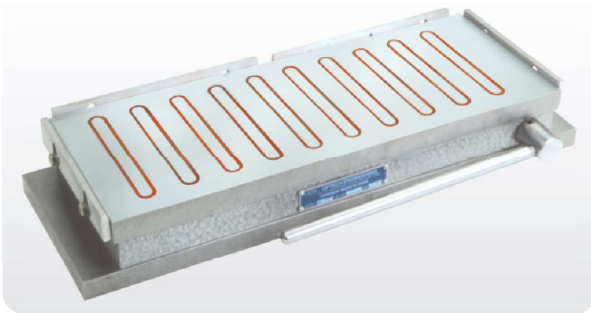


- Holding device for surface grinding machine, Tool & cutter grinder, Spark erosion machines.
- Accuracy as per IS : 4816 - 1987.
- Assembled with powerful Magnets.
- Poles individually magnetized for full loading power.
- Magnetic pull is 40-70% more than IS specification.
- Bottom plate has suitable extension to clamp on table.
- Easy operated ON-OFF lever.

Sr. No.	Cat No.	Size (mm)	Pole Gap (mm)
1.	UL 70802	250 L x 150 W x 60 H	19
2.	UL 70803	300 L x 150 W x 60 H	19
3.	UL 70804	300 L x 200 W x 65 H	19
4.	UL 70805	350 L x 150 W x 65 H	19
5.	UL 70806	400 L x 150 W x 65 H	19
6.	UL 70807	450 L x 150 W x 65 H	19
7.	UL 70808	450 L x 200 W x 70 H	19
8.	UL 70809	500 L x 200 W x 70 H	19
9.	UL 70810	600 L x 200 W x 70 H	19
10.	UL 70811	450 L x 250 W x 70 H	19
11.	UL 70812	450 L x 300 W x 70 H	19
12.	UL 70813	600 L x 250 W x 70 H	19
13.	UL 70814	600 L x 300 W x 70 H	19

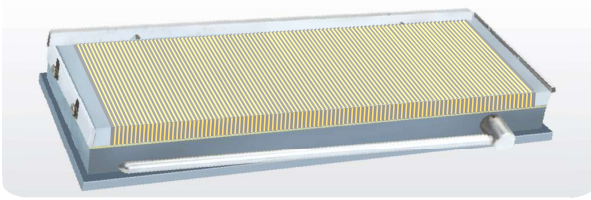
89 SERIES UL - 709

"ULTRA" BRAND PERMANENT MAGNETIC CHUCK CLOSE POLE TYPE (HEAVY DUTY)



- Holding device for surface grinding machine, Tool & cutter grinder, Spark erosion machines & also for light milling.
- The working face & bottom face are perfectly parallel.
- Assembled with powerful Magnets.
- Poles individually magnetized for full loading power.
- Magnetic pull is 40-70% more than IS specification.
- Bottom plate has suitable extension to clamp on table.
- Better magnetic grip due to close poles.
- Suitable to hold thin & small jobs.
- Easy operated ON-OFF lever.

Sr. No.	Cat No.	Size (mm)	Pole Gap (mm)
1.	UL 70901	250 L x 150 W x 65H	14
2.	UL 70902	300 L x 150 W x 65H	14
3.	UL 70903	300 L x 200 W x 65H	14
4.	UL 70904	350 L x 150 W x 65H	14
5.	UL 70905	400 L x 150 W x 65H	14
6.	UL 70906	450 L x 150 W x 70H	14
7.	UL 70907	450 L x 200 W x 70H	14
8.	UL 70908	500 L x 200 W x 70H	14
9.	UL 70909	600 L x 200 W x 70H	14
10.	UL 70910	450 L x 250 W x 70H	14
11.	UL 70911	450 L x 300 W x 70H	14
12.	UL 70912	600 L x 250 W x 70H	14
13.	UL 70913	600 L x 300 W x 70H	14

90 SERIES UL - 721
"ULTRA" BRAND MICRO FINE PITCH PERMANENT MAGNETIC CHUCK


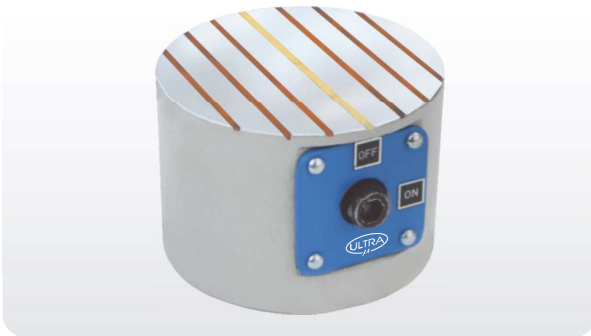
- Holding device for surface grinding machine, Tool & cutter grinder, Spark erosion machines.
- **Fine Pitch (1 + 0.5)** makes it suitable to hold very thin & small jobs.
- The working face & bottom face is perfectly parallel.
- Poles individually magnetized for full loading power.
- Suitable to hold thin & small jobs.
- Bottom plate has suitable extension to clamp on table.
- Better magnetic grip due to close pole.
- Easy operated ON-OFF lever

Sr. No.	Cat No.	Size (mm)	Pole Pitch (mm)
1.	UL 72100	150 L x 120 W x 60 H	1.5
2.	UL 72101	250 L x 150 W x 60 H	1.5
3.	UL 72102	300 L x 150 W x 60 H	1.5
4.	UL 72103	350 L x 150 W x 60 H	1.5
5.	UL 72104	400 L x 150 W x 60 H	1.5
6.	UL 72105	450 L x 150 W x 60 H	1.5
7.	UL 72106	450L x 200 W x 60 H	1.5

91 SERIES UL - 710
"ULTRA" BRAND ROUND MAGNETIC CHUCK


- Holding device for Rotary surface grinding and also for Lathe & cylindrical grinding machines.
- Accuracy as per IS : 4816 - 1987
- Magnetic pull is 20-40% more than IS specification.
- Assembled with powerful Magnets.
- ON-OFF by key.

Sr. No.	Cat No.	Size (mm)	Pole Gap (mm)
1.	UL 71002	Ø 150 x 70 H	14
2.	UL 71003	Ø 160 x 70 H	16
3.	UL 71004	Ø 175 x 70 H	16
4.	UL 71005	Ø 200 x 70 H	16
5.	UL 71006	Ø 225 x 70 H	16
6.	UL 71007	Ø 250 x 70 H	19
7.	UL 71008	Ø 300 x 70 H	19
8.	UL 71009	Ø 375 x 70 H	19
9.	UL 71010	Ø 400 x 70 H	19
10.	UL 71011	Ø 450 x 70 H	19

92 SERIES UL - 710
"ULTRA" BRAND SPECIAL TYPE CIRCULAR MAGNETIC CHUCK


- Holding device for Rotary surface grinding, light machining, also for Lathe & cylindrical grinding machines.
- The working face & bottom face is perfectly parallel.
- Assembled in powerful Rare Earth Magnets.
- Suitable for thin & small jobs.
- "V" construction design gives better magnetic force.
- Easy operated ON-OFF knob.

Sr. No.	Cat No.	Size (mm)
1.	UL 71012	Ø 75 x 60 H [3"]
2.	UL 71013	Ø 100 x 70 H [4"]
3.	UL 71014	Ø 150 x 70 H [6"]
4.	UL 71015	Ø 200 x 70 H [8"]

93 SERIES UL - 611
"ULTRA" BRAND MAGNETIC BLOCK


Both side can hold work pieces & can be turn ON-OFF individually

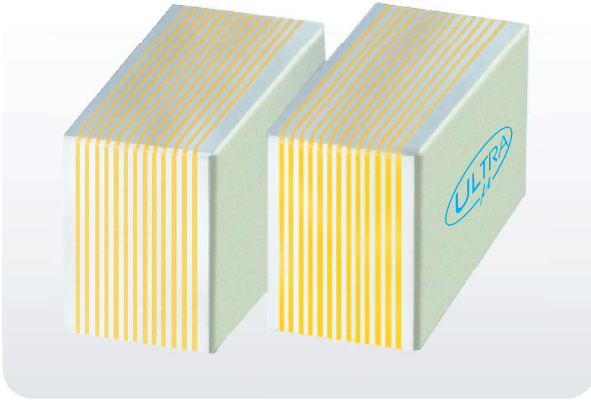
- **Both side can hold work pieces & can be turn ON-OFF individually**
- They are shear to the work table by turning ON-OFF magnet
- The side face can also hold work piece.
- Light Weight for easy positional adjustment.
- Removable On-OFF Handle.
- **Suitable for grinding machine & EDM Machine.**

Cat No.	Size (mm)
UL-61101	150 L x 50 W x 50 H



94 SERIES UL - 711

"ULTRA" BRAND TRANSFER BLOCKS

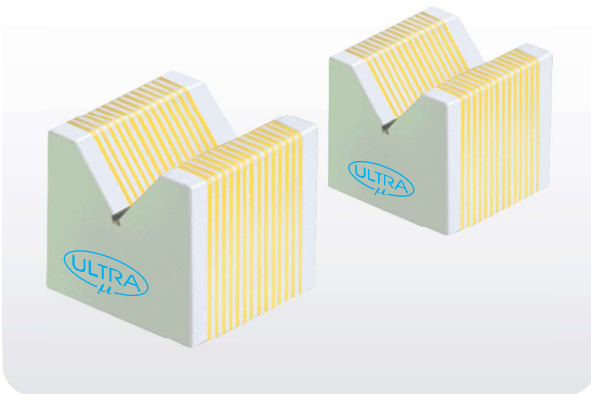


- Used as an accessory for magnetic chuck to clamp thin & odd shaped jobs.
- Simplest method of extending the magnetic flux of magnetic chuck with parallel poles to support the job.
- Maximum flux transformation when placed parallel to pole lines.
- Perfectly ground within 5 Micron & supplied in matched pair.

Sr. No.	Cat No.	Size (mm)
1.	UL 71101	50 W x 35 H x 100 L
2.	UL 71102	60 W x 30 H x 75 L
3.	UL 71103	50 W x 75 H x 75 L
4.	UL 71104	50 W x 50 H x 100 L
5.	UL 71105	80 W x 25 H x 120 L
6.	UL 71106	60 W x 25 H x 100 L
7.	UL 71107	50 W x 20 H x 100 L

95 SERIES UL - 712

"ULTRA" BRAND V TYPE TRANSFER BLOCKS



- Used as an accessory for magnetic chuck to clamp thin & odd shape jobs.
- Simplest method of extending the magnetic flux of magnetic chuck with parallel poles to support the job.
- Maximum flux transformation when placed parallel to pole lines.
- 90° V provided for round job.
- Perfectly ground within 5 micron & supplied in matched pair.

Sr. No.	Cat No.	Size (mm)
1.	UL 71201	50 W x 60 H x 45 L
2.	UL 71202	110 W x 60 H x 45 L
3.	UL 71203	75 W x 65 H x 35 L
4.	UL 71204	100 W x 65 H x 35 L
5.	UL 71205	60 W x 60 H x 45 L

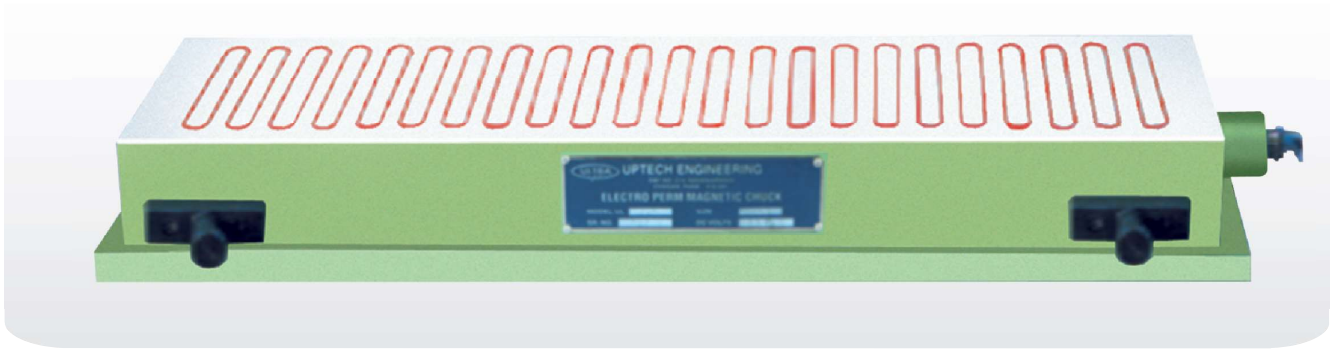
96 SERIES UL - 720

"ULTRA" BRAND ELECTRO MAGNETIC CHUCK For Cylindrical Grinding



- Work holding device on Cylindrical Grinding m/c to grind outer diameter & face component as bearing recess, flanges, collet bushes, discs etc.
- Can also be used on Lathe machine.
- Mag - D - Mag with variable control unit allows to neutralize the residual magnetism precisely.
- Magnetic Coil (outer body) remains stationary & middle part (Round body) will rotate with spindle through adaptor sleeve.
- Variable supply is useful to true the job.
- 4 T-slots for easy location of job.
- Chuck is tested for Slipping force, Temperature rise, Waterproof, Electrical & Demagnetizing tests.
- Battery Back-up unit is also available on request

Sr. No.	Cat No.	Size (mm)
1.	UL- 72001	Ø 100 [4"]
2.	UL- 72002	Ø 150 [6"]
3.	UL- 72003	Ø 200 [8"]
4.	ULTRA" Mag - D - Mag with variable control unit	



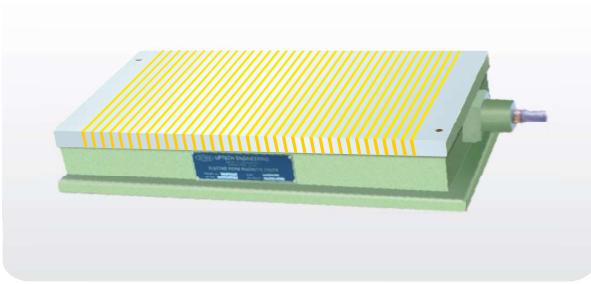
- Work holding device for surface grinding machines.
- Each pole is having separate coil, so/hence very strong & even magnetic flux is generated.
- Accuracy as per IS : 8710 - 1978.
- Magnetic pull is 30-50% more than IS specification.
- Mag - D - Mag with variable control unit allows to neutralize the residual magnetism precisely, using a microprocessor based control circuitry.
- Variable supply to vary power which helps in alignment & removing of warpages of thin jobs.
- Chuck is tested for Slipping force, Waterproof test, temperature rise test, Electrical & Demagnetizing tests.
- Also available in Longitudinal Poles.
- We also manufacture Special chucks to suit individual requirements.
- Good quality & standard electrical accessories.

Sr. No.	Cat No.	Size (mm)	Pole Gap (mm)	Pole Pitch
1.	UL 71401	450 L x 150 W x 95 H	15	40
2.	UL 71402	500 L x 200 W x 95 H	15	40
3.	UL 71403	600 L x 200 W x 95 H	15	40
4.	UL 71404	600 L x 250 W x 95 H	15	40
5.	UL 71405	750 L x 250 W x 95 H	15	40
6.	UL 71406	900 L x 250 W x 95 H	15	40
7.	UL 71407	600 L x 300 W x 95 H	15	40
8.	UL 71408	750 L x 300 W x 95 H	15	40
9.	UL 71409	900 L x 300 W x 95 H	15	40
10.	UL 71410	1000 L x 250 W x 100 H	15	40
11.	UL 71411	1000 L x 300 W x 100 H	15	40
12.	UL 71412	1500 L x 250 W x 100 H	15	40
13.	UL 71413	1500 L x 300 W x 100 H	15	40
14.	UL 71414	1500 L x 400 W x 100 H	15	40
15.	UL 71415	800 L x 400 W x 100 H	15	40
16.	UL 71416	1200 L x 500 W x 100 H	15	40
17A		"ULTRA" MAG D-MAG WITH VARIABLE CONTROL UNIT		Upto 1000L 2 Amp. Upto 1500L 3 Amp.
17B		"ULTRA" MAG D-MAG WITH VARIABLE CONTROL UNIT & BATTERY BACK-UP (20 minutes)		Upto 1000L 2 Amp. Upto 1500L 3 Amp.



98 SERIES UL - 715

"ULTRA" BRAND HEAVY DUTY FINE PITCH MULTI COIL ELECTRO MAGNETIC CHUCK (Transverse Pole) IS - 8710 - 1978

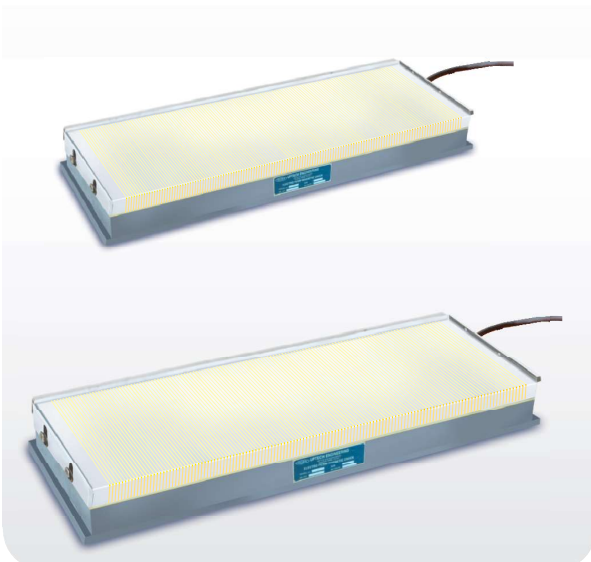


- Work holding device for surface grinding machines.
- Each pole is having separate coil, so/hence very strong & even magnetic flux is generated.
- Accuracy as per IS : 8710 - 1978.
- Magnetic pull is 30-50% more than IS specification.**
- Fine Pitch 5mm** makes it suitable to hold thin & small jobs.
- Mag - D - Mag with variable control unit allows to neutralize the residual magnetism precisely , using a microprocessor based control circuitry.
- Variable supply to vary power which helps in alignment & removing of warpages of thin jobs.
- Chuck is tested for Slipping force, Waterproof test, Temperature rise test, electrical & demagnetizing tests.
- Also available in **Longitudinal Poles.**

Sr. No.	Cat No.	Size (mm)	Pole Gap (mm)
1.	UL 71501	450 L x 150 W x 95 H	5 (4 + 1)
2.	UL 71502	500 L x 200 W x 95 H	5 (4 + 1)
3.	UL 71503	600 L x 200 W x 95 H	5 (4 + 1)
4.	UL 71504	600 L x 250 W x 95 H	5 (4 + 1)
5.	UL 71505	750 L x 250 W x 95 H	5 (4 + 1)
6.	UL 71506	900 L x 250 W x 95 H	5 (4 + 1)
7.	UL 71507	600 L x 300 W x 95 H	5 (4 + 1)
8.	UL 71508	750 L x 300 W x 95 H	5 (4 + 1)
9.	UL 71509	900 L x 300 W x 95 H	5 (4 + 1)
10.	UL 71510	1000 L x 250 W x 100 H	5 (4 + 1)
11.	UL 71511	1000 L x 300 W x 100 H	5 (4 + 1)
12.	UL 71512	1500 L x 250 W x 100 H	5 (4 + 1)
13.	UL 71513	1500 L x 300 W x 100 H	5 (4 + 1)
14.	UL 71514	1500 L x 400 W x 100 H	5 (4 + 1)
15.	UL 71515	800 L x 400 W x 100 H	5 (4 + 1)
	UL 71516	1200 L x 400 W x 100 H	5 (4 + 1)
17A.	"ULTRA" MAG D-MAG WITH VARIABLE CONTROL UNIT		Upto 1000 L 2 Amp. Upto 1500 L 3 Amp.

99 SERIES UL - 722

"ULTRA" BRAND MULTI COIL MICRO FINE PITCH ELECTRO MAGNETIC CHUCK



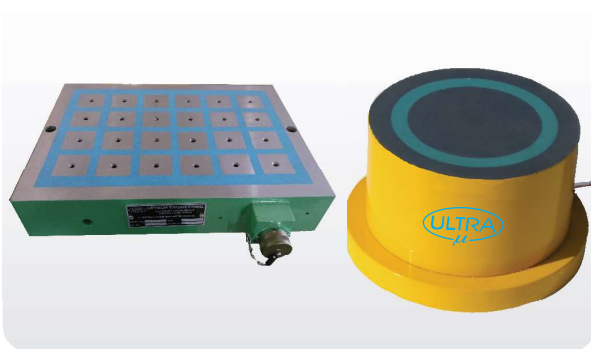
- Work holding device for surface grinding machines.
- Each pole is having separate coil, so/hence very strong & even magnetic flux is generated.
- Accuracy as per IS : 8710 - 1978.
- Magnetic pull is 30-50% more than IS specification.**
- Fine Pitch (1 + 0.5)** makes it suitable to hold very thin & small jobs.
- Mag - D - Mag with variable control unit allows to neutralize the residual magnetism precisely , using a microprocessor based control circuitry.
- Variable supply to vary power which helps in alignment & removing of warpages of thin jobs.
- Chuck is tested for Slipping force, Waterproof test, Temperature rise test, Electrical & Demagnetizing tests.
- Good quality & standard electrical accessories.
- We also manufacture Special chucks to suit individual requirement.**

Sr. No.	Cat No.	Size (mm)	Pole Pitch (mm)
1.	UL 72201	450L x 150W x 95H	1.5
2.	UL 72202	450L x 200W x 95H	1.5
3.	UL 72203	500L x 200W x 95H	1.5
4.	UL 72204	600L x 200W x 95H	1.5
5.	UL 72205	750L x 250W x 95H	1.5
6 A.	"ULTRA" MAG D-MAG WITH VARIABLE CONTROL UNIT		2Amp.
6 B.	"ULTRA" MAG D-MAG WITH VARIABLE CONTROL UNIT & BATTERY BACK-UP (20 minutes)		2Amp.

100 SERIES UL - 836
"ULTRA" BRAND HEAVY DUTY FINE PITCH MULTI COIL ELECTRO MAGNETIC CHUCK


- Work holding device for surface grinding machines.
- Each pole is having separate coil, so/hence very strong & even magnetic flux is generated.
- Accuracy as per IS : 8710 - 1978.
- **Magnetic pull is 30-50% more than IS specification.**
- **Fine Pitch 6.5 mm** makes it suitable to hold thin & small jobs.
- Mag - D - Mag with variable control unit allows to neutralize the residual magnetism precisely, using a microprocessor based control circuitry.
- Variable supply to vary power which helps in alignment & removing of warpages of thin jobs.
- Chuck is tested for Slipping force, Waterproof test, Temperature rise test, electrical & demagnetizing tests.
- Also available in **Longitudinal Poles.**

Code No.	Size (mm)	Pole Gap (mm)
UL – 83601	450 L x 150 W x 95 H	6.5 (5+1.5) mm
UL – 83602	500 L x 200 W x 95 H	6.5 (5+1.5) mm
UL – 83603	600 L x 200 W x 95 H	6.5 (5+1.5) mm
UL – 83604	600 L x 250 W x 95 H	6.5 (5+1.5) mm
UL – 83605	750 L x 250 W x 95 H	6.5 (5+1.5) mm
UL – 83606	900 L x 250 W x 95 H	6.5 (5+1.5) mm
UL – 83607	600 L x 300 W x 95 H	6.5 (5+1.5) mm
UL – 83608	700 L x 300 W x 95 H	6.5 (5+1.5) mm
UL – 83609	900 L x 300 W x 95 H	6.5 (5+1.5) mm
UL – 83610	1000 L x 250 W x 100 H	6.5 (5+1.5) mm
UL – 83611	1000 L x 300 W x 100 H	6.5 (5+1.5) mm
UL – 83612	1500 L x 250 W x 100 H	6.5 (5+1.5) mm
UL – 83613	1500 L x 300 W x 100 H	6.5 (5+1.5) mm
UL – 83614	800 L x 400 W x 100 H	6.5 (5+1.5) mm
UL – 83615	1200 L x 400 W x 100 H	6.5 (5+1.5) mm

101 SERIES UL - 839
"ULTRA" BRAND MODULAR ELECTROPERMANENT MAGNET


- Work holding device for conventional & CNC milling m/c, and drilling operations.
- **COLD DEVICE** as it doesn't require power continuously except for short period of activation & deactivation.
- Suitable for light milling i.e. 1-2 mm depth of cut at recommended speed & feed.
- Maximum material removal is possible.
- Economical for operation & maintenance.
- No accidents due to power failure.

Product is designed as per customer requirement.

102 SERIES **UL - 719**

"ULTRA" BRAND ELECTROPERMANENT MAGNETIC CHUCK (70 x 70) Quad Pole



- Work holding device for conventional & CNC milling m/c.
- COLD DEVICE as it doesn't require power continuously except for short period of activation & deactivation.
- Suitable for light milling i.e. 3-6 mm depth of cut at recommended speed & feed.
- Maximum material removal is possible.
- Economical for operation & maintenance.
- No accidents due to power failure.
- Slipping force is 2.5 - 3.5 Kg/cm².
- Vertical Lifting Force is 40 - 45 Kg/cm².
- Variable supply unit to vary power which helps in alignment of jobs.
- Chuck is tested for Slipping force, Waterproof test, Electrical & Demagnetizing tests.
- Standard electrical accessories.
- **We also manufacture Special chucks to suit individual requirement**

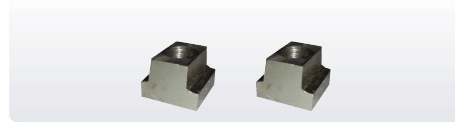
Sr. No.	Cat No.	Size (mm)
1.	UL - 71901	600 L x 320 W x 80 H
2.	UL - 71902	750 L x 320 W x 90 H
3.	UL - 71903	1000 L x 320 W x 90 H
4.	UL - 71904	1500 L x 320 W x 90 H
5.	UL - 71905	600 L x 410 W x 80 H
6.	UL - 71906	750 L x 410 W x 90 H
7.	UL - 71907	1000 L x 410 W x 90 H
8.	UL - 71908	1500 L x 410 W x 90 H

Sr. No.	Cat No.	Size (mm)
9.	UL - 71909	410 L x 410 W x 80 H
10.	UL - 71910	800 L x 410 W x 90 H
11.	UL - 71911	1000 L x 500 W x 90 H
12.	"ULTRA" CONTROL UNIT WITH VARIABLE SUPPLY	
13.	"ULTRA" POLE EXTENTION BLOCK	
14.	SPECIAL "ULTRA" POLE EXTENTION BLOCK	
15.	"ULTRA" SPRING POLE EXTENTION BLOCK	

Accessories for ELECTROPERMANENT MAGNETIC CHUCK



Plain Pad



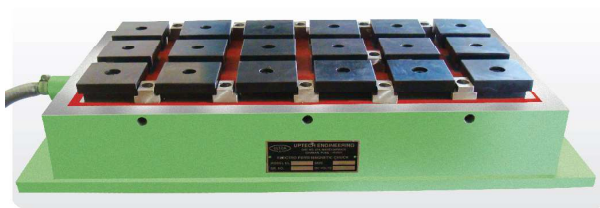
T Nut



T Type Pad



Right angle pad



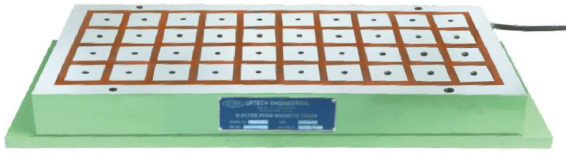
E. P. M. Chuck with T Type Pad and T Nut



E. P. M. Chuck with Right angle pad

103 SERIES **UL - 718**

**"ULTRA" BRAND ELECTROPERM LIGHT DUTY CHUCK
(47 x 47 Quad Pole)**



- Work holding device for Milling machines.
- COLD DEVICE as it doesn't require power continuously except for short period of activation & deactivation.
- Suitable for light milling i.e. 1-3 mm depth of cut at recommended speed & feed.
- Maximum material removal is possible.
- Economical for operation & maintenance.
- No accidents due to power failure.
- Slipping force is 2.5 - 3 Kg/cm².
- Vertical Lifting Force is 35 - 40 Kg/cm².
- Variable supply unit to vary power which helps in alignment of jobs.
- Chuck is tested for Slipping force, Waterproof test, Temperature rise test, Electrical & Demagnetizing tests.
- Good quality & standard electrical accessories.
- **We also manufacture Special chucks to suit individual requirement.**

Sr. No.	Cat No.	Size (mm)
1.	UL - 71801	500L x 200 W x 80 H
2.	UL - 71802	600L x 200 W x 80 H
3.	UL - 71803	600L x 250 W x 80 H
4.	UL - 71804	600L x 300 W x 80 H
5.	UL - 71805	600L x 400 W x 80 H
6.	UL - 71806	750L x 250 W x 90 H

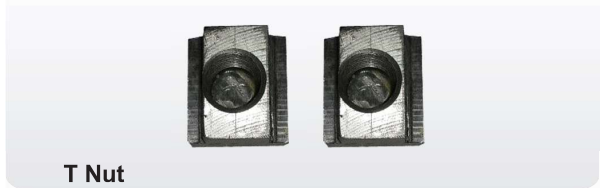
Sr. No.	Cat No.	Size (mm)
7.	UL - 71807	750L x 300 W x 90 H
8.	UL - 71808	1000 L x 250 W x 90 H
9.	UL - 71809	400 L x 400 W x 90 H
10.	UL - 71810	800 L x 400 W x 90 H
11.	UL - 71811	1000 L x 500 W x 90 H
12.	"ULTRA" CONTROL UNIT WITH VARIABLE SUPPLY	



Plain Pad



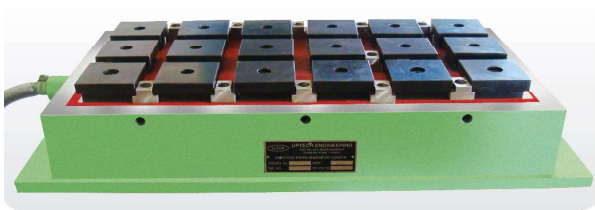
T Type Pad



T Nut



Right angle pad



E. P. M. Chuck with T Type Pad and T Nut



E. P. M. Chuck with Right angle pad



104 SERIES UL - 816

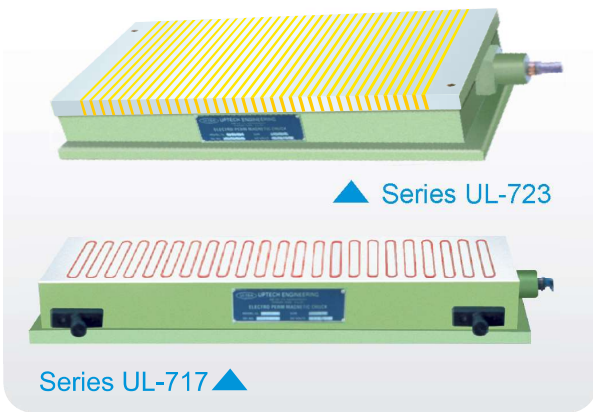
"ULTRA" BRAND ELECTROPERM MAGNETIC CHUCK For Horizontal Machining



- EPM CHUCK is designed in such a way that it is very useful for Horizontal Machining Centers. It is also useful in conventional machining for Horizontal milling operation.
- As Electro Permanent Magnetic (EPM) Principle is used, **Continuous Electricity is not required.**
- Easily integrated with pallet clamping.
- Manufactured as per customer requirement.

105 SERIES UL - 723

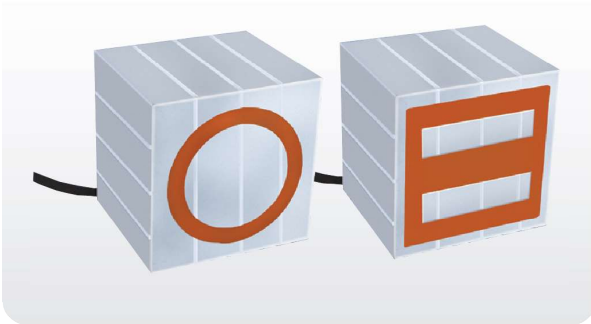
"ULTRA" BRAND FINE PITCH ELECTROPERM MAGNETIC CHUCK For Grinding Machine



- Work holding device for surface grinding machines.
- COLD DEVICE as it doesn't require power continuously except for short period of activation & deactivation.
- Parallelism & flatness is 0.010mm/300mm.
- Suitable for thin & small jobs.
- Economical for operation & maintenance.
- Uniform clamping force all over surface.
- Negligible power consumption.
- No accidents due to power failure.
- Slipping force is 2.5 Kg/cm².
- Vertical Lifting Force is 35 - 40 Kg/cm².
- Variable supply unit to vary power which helps in alignment & removing of warpings of thin jobs.
- Chuck is tested for Slipping force, Waterproof test,
- Electrical & Demagnetizing tests.
- Standard electrical accessories.
- **We also manufacture Special chucks to suit individual requirement.**

Sr. No.	Cat No.	Size (mm)	Pole Gap (mm)
1.	UL 72301	450 L x 150 W x 100 H	6.5
2.	UL 72302	500 L x 200 W x 100 H	6.5
3.	UL 72303	600 L x 200 W x 100 H	6.5
4.	UL 72304	600 L x 250 W x 100 H	6.5
5.	UL 72305	750 L x 250 W x 100 H	6.5
6.	UL 72306	900 L x 250 W x 100 H	6.5
7.	UL 72307	600 L x 300 W x 100 H	6.5
8.	UL 72308	750 L x 300 W x 100 H	6.5
9.	UL 72309	900 L x 300 W x 100 H	6.5
10.	UL 72310	1000 L x 250 W x 110 H	6.5
11.	UL 72311	1000 L x 300 W x 110 H	6.5
12.	UL 72312	1500 L x 250 W x 110 H	6.5
13.	UL 72313	1500 L x 300 W x 110 H	6.5
14.	UL 72314	1500 L x 400 W x 110 H	6.5
15.	"ULTRA" CONTROL UNIT WITH VARIABLE SUPPLY		

Sr. No.	Cat No.	Size (mm)	Pole Gap (mm)
1.	UL 71701	450 L x 150 W x 100 H	15
2.	UL 71702	500 L x 200 W x 100 H	15
3.	UL 71703	600 L x 200 W x 100 H	15
4.	UL 71704	600 L x 250 W x 100 H	15
5.	UL 71705	750 L x 250 W x 100 H	15
6.	UL 71706	900 L x 250 W x 100 H	15
7.	UL 71707	600 L x 300 W x 100 H	15
8.	UL 71708	750 L x 300 W x 100 H	15
9.	UL 71709	900 L x 300 W x 100 H	15
10.	UL 71710	1000 L x 250 W x 110 H	15
11.	UL 71711	1000 L x 300 W x 110 H	15
12.	UL 71712	1500 L x 250 W x 110 H	15
13.	UL 71713	1500 L x 300 W x 110 H	15
14.	UL 71714	1500 L x 400 W x 110 H	15
15.	"ULTRA" CONTROL UNIT WITH VARIABLE SUPPLY		

106 SERIES UL - 609
"ULTRA" BRAND ELECTRO MAGNETIC SQUARE BLOCK


- Used as a workpiece holding device for Squareness grinding inspection & light machining.
- Accuracy for Squareness & parallelism is within 0.005mm.
- Front is magnetic face.
- Hardened strips provided on all face except back of magnetic face for wear resistance.
- Operates on 24 VDC, controlled by Mag-D-Mag with variable control unit.
- Easy to operate.
- Saves time as mechanical clamps are avoided.
- DEMAG switch for easy removal of jobs.
- Battery back-up unit is also available on request.

Sr. No.	Cat No.	Size (mm)	Magnetic Pull
1.	UL 60901	110 x 110 x 110	125 Kg
2.	"ULTRA" MAG D-MAG WITH VARIABLE CONTROL UNIT		

107 SERIES UL - 801
"ULTRA" BRAND PLATE TYPE DEMAGNETISERS (NOT A CONTINUOUS DUTY TYPE)


- Used for removing surface residual magnetism.
- Operates on 220V single phase AC supply.
- Suitable for all types of steel such as HSS, Nickel chrome, spring steel, die steel etc.
- Foot switch for easy & safely operation.
- Fibre top allows scratch free demagnetization.

Sr. No.	Cat No.	Size (mm)
1.	UL-80101	150 x 100
2.	UL-80102	150 x 150
3.	UL-80103	150 x 225
4.	UL-80104	150 x 300
5.	UL-80105	350 x 350

108 SERIES UL - 803
"ULTRA" BRAND MINI DEMAGNETISERS WITH HANDLE

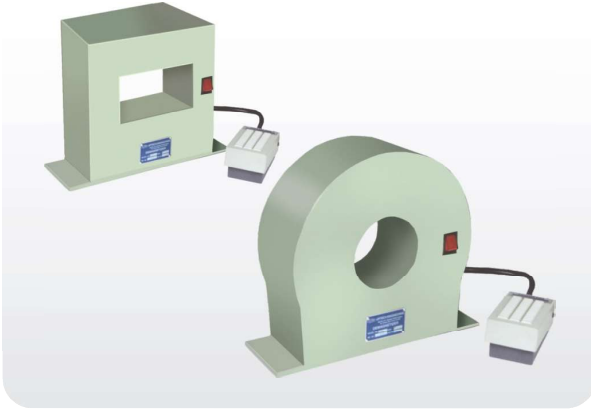

- Used to remove surface residual magnetism from specific area of Dies & moulds parts, punches etc.
- Operates on 220V single phase AC supply.
- Compact design & easy to operate.
- It demagnetizes just by sliding over the surface by pressing single pole momentary switch .

Sr. No.	Cat No.	Size (mm)
1.	UL-80304	150 L x 100 W
2.	UL-80305	150 L x 150 W



109 SERIES UL - 802

**"ULTRA" BRAND COIL TYPE DEMAGNETISERS
(NOT A CONTINUOUS DUTY TYPE)**

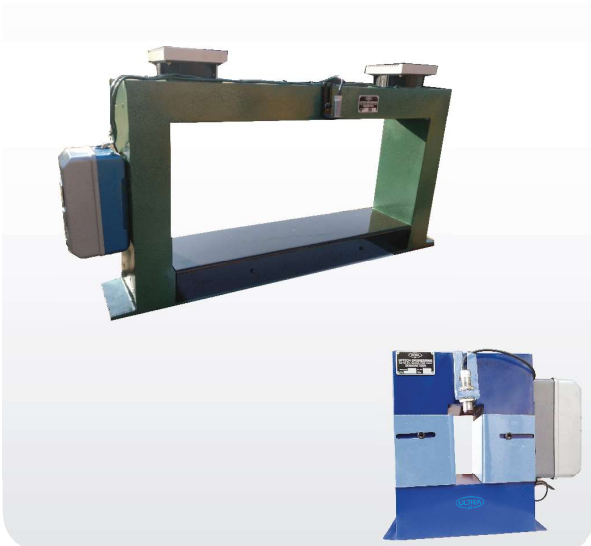


- Used for removing surface residual magnetism of round & cylindrical jobs.
- Operates on 220V single phase AC supply.
- Suitable for all types of steel such as HSS, Nickel chrome, spring steel, die steel etc.
- Foot switch for easy & safely operation.
- Fibre body allows scratch free demagnetization.

Sr. No.	Cat No.	Size (mm)
1.	UL- 80201	Ø 100 bore
2.	UL- 80202	Ø 150 bore
3.	UL- 80203	Ø 200 bore
4.	UL- 80204	Ø 300 bore
5.	UL- 80205	100 x 100 x 50H
6.	UL- 80206	200 x 200 x 50H
7.	UL- 80207	200 x 200 x 100H

110 SERIES UL - 802

**"ULTRA" BRAND TUNNEL TYPE DEMAGNETISER
(CONTINUOUS DUTY TYPE)**

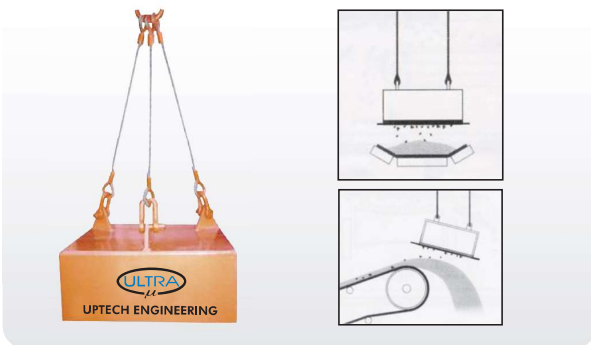


- Used for removing surface residual magnetism of round & square job.
- Operated on 415 volt 2 phase A/c supply.
- Suitable for continuous duty cycle.
- Current 10 amps.
- Fibre body is used for scratch free demagnetising.
- MCB is provided for safety.
- **Special sizes are manufactured as per requirement.**

Sr. No.	Cat No.	Size (mm)
1.	UL-80207	200 L x 200 W x 80 H

111 SERIES UL - 814

"ULTRA" BRAND SUSPENSION MAGNET



- Most Effective for **removal at Tramp iron from materials carried over conveyors.**
- It is suspended on the conveyor belt.
- **It is mostly suitable in coal mines, food processing domestic waste cycling plant and material processing Indl. etc.**
- Suspension magnet works on permanent magnetic principle and requires manual cleaning.
- Suspension magnet is designed depend upon customer requirement.

112 SERIES UL - 805
“ULTRA” BRAND PERMANENT MAGNETIC LIFTER


- Used for lifting & handling of steel plates, heavy block & castings as well as heavy round or cylindrical parts.
- The 1 : 3.5 safety factor of the recommended load to the test load ensures use at optimal working conditions even with substantial air gaps & surface conditions.
- Compact design, strong magnetic pull, total work safety
- Easy operated lever for ON-OFF.
- Spring loaded block at side for safety feature.
- Suitable for Flat & Round jobs.
- No damage on job during operation.
- **We Also Undertake Calibration with form No. 11 and Repairing of All Types of Permanent Magnetic Lifter**


TASTED CAPACITY 1 : 3.5 TIMES

Sr. No.	Cat No.	Size (mm) (Height is without hook)	Lifting Capacity for flat job	Tested Capacity for flat job (1 : 3.5 Times)	Weight
0.	UL - 80500	90 L x 65 W x 85 H	100 Kg	350 Kg	4 Kg
1.	UL - 80501	170 L x 85 W x 105 H	200 Kg	700 Kg	9 Kg
2.	UL - 80502	170 L x 85 W x 105 H	250 Kg	875 Kg	9 Kg
3.	UL - 80503	230 L x 85 W x 105 H	300 Kg	1050 Kg	13 Kg
4.	UL - 80504	230 L x 85 W x 105 H	450 Kg	1575 Kg	14 Kg
5.	UL - 80512	260 L x 85 W x 105 H	500 Kg	1750 Kg	14 Kg
6.	UL - 80505	255 L x 110 W x 130 H	600 Kg	2100 Kg	25 Kg
7.	UL - 80506	290 L x 110 W x 130 H	700 Kg	2450 Kg	30 Kg
8.	UL - 80507	350 L x 130 W x 135 H	1000 Kg	3500 Kg	45 Kg
9.	UL - 80508	395 L x 150 W x 160 H	1500 Kg	5250 Kg	68 Kg
10.	UL - 80509	460 L x 170 W x 185 H	2000 Kg	7000 Kg	103 Kg

TASTED CAPACITY 1 : 3 TIMES

Sr. No.	Cat No.	Size (mm) (Height is without hook)	Lifting Capacity for flat job	Tested Capacity for flat job (1 : 3 Times)	Weight
0.	UL - 80500 / A	90 L x 65 W x 85 H	100 Kg	300 Kg	4 Kg
1.	UL - 80501 / A	170 L x 85 W x 105 H	200 Kg	600 Kg	9 Kg
2.	UL - 80502 / A	170 L x 85 W x 105 H	250 Kg	750 Kg	9 Kg
3.	UL - 80503 / A	230 L x 85 W x 105 H	300 Kg	900 Kg	13 Kg
4.	UL - 80504 / A	230 L x 85 W x 105 H	450 Kg	1350 Kg	14 Kg
5.	UL - 80512 / A	260 L x 85 W x 105 H	500 Kg	1500 Kg	14 Kg
6.	UL - 80505 / A	255 L x 110 W x 130 H	600 Kg	1800 Kg	25 Kg
7.	UL - 80506 / A	290 L x 110 W x 130 H	700 Kg	2100 Kg	30 Kg
8.	UL - 80507 / A	350 L x 130 W x 135 H	1000 Kg	3000 Kg	45 Kg
9.	UL - 80508 / A	395 L x 150 W x 160 H	1500 Kg	4500 Kg	68 Kg
10.	UL - 80509 / A	460 L x 170 W x 185 H	2000 Kg	6000 Kg	103 Kg
11.	UL - 80510 / A	555 L x 270 W x 270 H	3000 kg	9000 Kg	280 Kg
12.	UL - 80511 / A	715 L x 350 W x 310 H	5000 kg	15000 Kg	540 Kg



113 SERIES **UL - 834**

"ULTRA" BRAND BATTERY OPERATED ELECTRO PERMANENT MAGNETIC LIFTER



FEATURES

- Batteries only work in the moment of magnetization & demagnetization, during the lifting & Handling.
- Maintenance free completely sealed rechargeable batteries
- Inbuilt battery charger.
- Safety Factor: 3 Times.
- Light Weight & Robust construction.
- With battery full charged can switch on/ off approximately 400 times.
- Widely used in the places where the access to power is inconvenient.

APPLICATION

- It is use on flame cutting machine, Plasma cutting machine, water jet cutting machine etc.
- It is useful for handling small as well as large plates.
- It is suitable for handling Plates & round bars.
- Radio remote control is optional.

Cat No.	Flat Load (Kgs)	Battery (VDC)	Charging (VAC)
UL-83401	500kg	2 x 12	230
UL-83402	1000kg	2 x 12	230
UL-83403	2000kg	2 x 12	230

114 SERIES **UL - 817**

"ULTRA" BRAND ELECTROPERM MAGNETIC LIFTER ADJUSTABLE TYPE



FEATURES

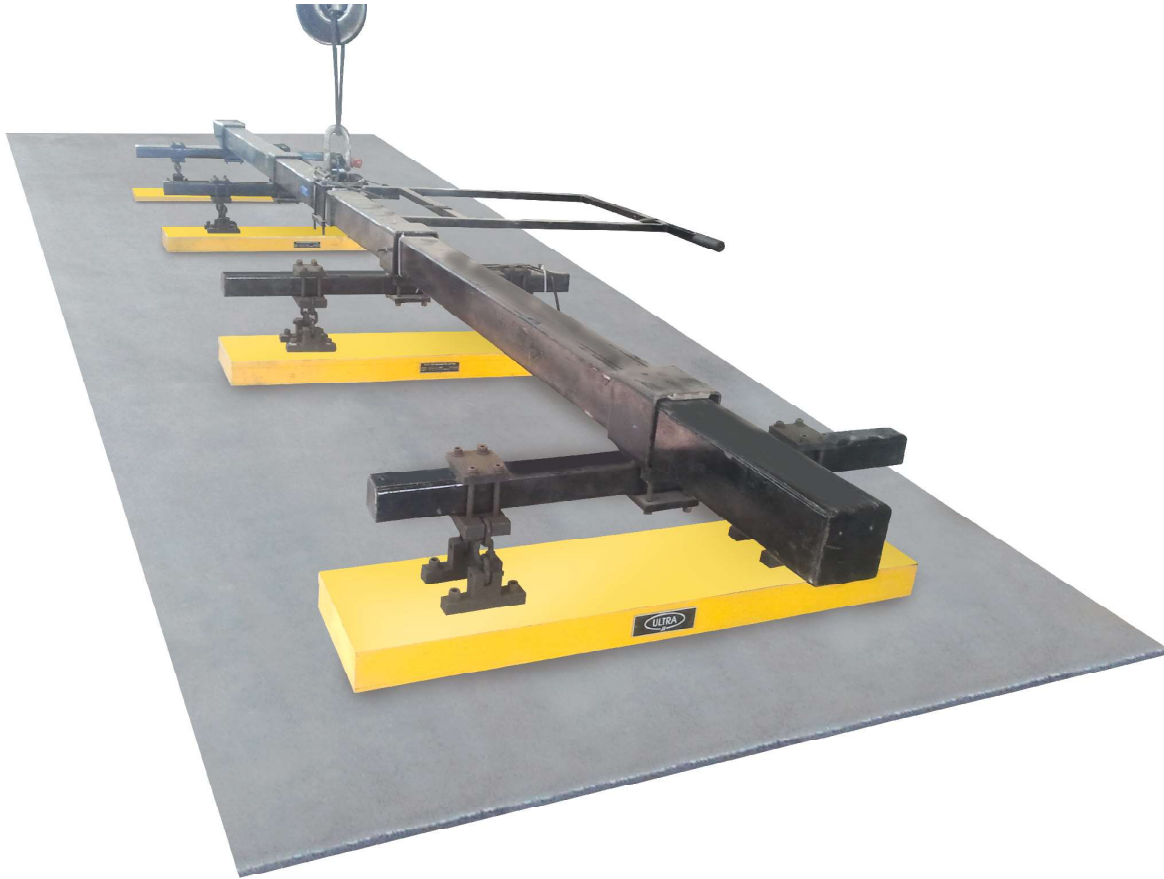
- Electroperm Magnetic Lifter is Designed to lift single bars or pipe.
- Electroperm Magnetic Lifter is having special provision to adjust the angle according to diameter of bars or pipe.
- Electroperm Magnetic Lifter do not required continuous electricity.
- Electroperm Magnetic Lifter can be used in a multiple set if the Length of job is more

APPLICATION

This type of lifter widely used for lifting round bar or pipe.

DESIGN

- Designing of Electroperm Magnetic Lifter Depends upon minimum and maximum size of bar or pipe. (Diameter and length)
- Crane Capacity.
- Weight of bar or pipe.



FEATURES

- Electro Magnetic Lifter is design with the consideration of all Industrial safety knob, therefore they are very compact, light weight, high strength and very reliable safe in use.
- Electro Magnetic Lifter are work on Electricity & require 220V or 415V supply.
- Electro Magnetic Lifter is used with combination of various magnets. At fixed structure with provision of chain .So this will help to handle plain as well as bend sheet, In short it will take care of bendness of sheet
- Inching feature or variable power knob is provided, It ensures that single plate will be lifted.
- Lamp block – Displays the system presents.

APPLICATION

- It is use on flame cutting machine, plasma cutting machine and water jet cutting machine .
- It is useful for handling small as well as large plates.
- Controller is having opetional facility of battery back up which helps to keep magnet on for 15 minutes.

DESIGN

- Designing of Electro Magnetic Plate Lifter Depends upon minimum and maximum size of plate (length X weight X thickness)
- Crane Capacity.
- Weight of Plates.



116 SERIES **UL - 818**

"ULTRA" BRAND ELECTRO PERMANENT MAGNETIC LIFTER (EPM) For Plate Handling

Plate will not fall even when Electric power fails



SINGLE BEAM EPM LIFTER



DOUBLE BEAM EPM LIFTER



Adjustable Magnets

**MODULAR FLEXIBLE
EPM LIFTER**

FEATURES

- EPM lifting magnet is designed with the consideration of all industrial safety knobs. Therefore they are very compact light weight high strength and very reliable and safe in use.
- Electro Perm Magnetic lifter is combination of permanent as well as electro magnet power which is required to clamp the job or declamp the job.
- Lifted plate will not failed down even electric power failed because EPM LIFTER requires power only for holding the plates and declamping the plates. So it is 100% safe for handling the plates.
- **Continuous electricity is not required** so it having advantage of saving electricity over conventional electro magnetic Lifter.
- Electro permanent magnetic lifter is used with combination of various magnets. At fix structure with **provision of chain**. So this will help to handle plain as well as bend sheets in short it will **take care of bendness** of plates.
- **Safety interlock key** to magnetized / demagnetized. Two buttons are to be press simultaneously with help to avoid chance of accident.
- **"Inching" feature** - when the magnets is switch ON, it might lift more than a single plate. Inching operation reduces the magnetic power slowly such that additional plates, if lifted are dropped. This is used to make sure that only one plate is handled at time.
- **Lamp Block** - Displays the systems present state.

APPLICATION

- Ideal for handling single plate in stockyards.
- Most effective in the ship building industry.
- It is use on flame cutting m/c. plasma cutting m/c and water jet cutting m/c.
- It is useful for handling small as well as large plates.
- EPM Lifter is design as per customer plate sizes.
- Controller is having special facility of selector switch help for lifting small size sheets and large plates.
- It is the EPM lifting system is very suitable with EOT / GANTRY / MOBILE crane etc.

OPTIONAL UNITS

- **Radio Remote Control** - Operates from a convenient distance all the function i.e. MAG / DEMAG / Inching.
- **ADPREM** - Accidental Demagnetization Prevention Mechanism. Disable the demagnetization cycle when carrying load.

DESIGN

- Designing of EPM Plate Lifter Depends upon minimum and maximum size of plate (length X weight X thickness)
- Crane Capacity.
- Weight of Plates.

117 SERIES **UL - 820**

"ULTRA" BRAND ELECTRO Permanent Magnetic Tilting Lifter for Sheets (Horizontal To Vertical And Vice A Versa)



Plate will not fall even when Electric power fails

FEATURES

- Electro Permanent Magnets for Handling in Vertical or Horizontal Position.
- EPM lifting magnet is designed with the consideration of all industrial safety knobs. Therefore they are very compact light weight high strength and very reliable and safe in use.
- Electro Perm Magnetic lifter is combination of permanent as well as electro magnet power which is required to clamp the job or declamp the job.
- Lifted plate will not fail down even when electric power fail because EPM LIFTER requires power only a for holding the plates and declamping the plates. So it is 100% safe for handling the plates.
- Continuous electricity is not required so it is having advantage of saving electricity over conventional electro magnetic Lifter.
- Electro permanent magnetic lifter is used with combination of various magnets. At fix structure with provision of chain. So this will help to handle plain as well as bend sheets in short it will take care of bendness of plates.
- Safety interlock key to magnetized / demagnetized. Two buttons are to be press simultaneously with help to avoid chance of accident.
- "Inching" feature - when the magnets is switch ON, it might lift more than a single plate. Inching operation reduces the magnetic power slowly such that additional plates, if lifted are dropped. This is used to make sure that only one plate is handled at a time.
- Lamp Block - Displays the systems present state.
- Spreader beam fitted with suspension systems / Control Panel / Indicative Tower lamp etc.

APPLICATION

- Ideal for handling single plate in stockyards.
- Most effective in ship building industry.
- It is use on flame cutting m/c, plasma cutting m/c and water jet cutting m/c.
- It is useful for handling small as well as large plates.
- EPM Lifter is design as per customer plate sizes.
- Controller is having special facility of selector switch help for lifting small size sheets and large plates.
- It is the EPM lifting system is very suitable with EOT / GANTRY / MOBILE crane etc.

OPTIONAL UNITS

- Radio Remote Control - Operates from a convenient distance all the function i.e. MAG / DEMAG / Inching.
- ADPREM - Accidental Demagnetization Prevention Mechanism. Disable the demagnetization cycle when carrying load.

DESIGN

- Designing of EPM Plate Lifter Depends upon minimum and maximum size of plate (length X weight X thickness)
- Crane Capacity.
- Weight of Plates.

Plate Dimensions		Plate Thickness		No of Magnets	Rated Capacity
Length (mm)	Width (mm)				(kg)
Min	Max	Min	Max		
1500	6300	500	2500	4	4000
3000	12500	500	3000	4	7500
3000	12500	500	3500	4	10000
3000	12500	500	3500	4	12000
3000	12500	500	3500	6	16000

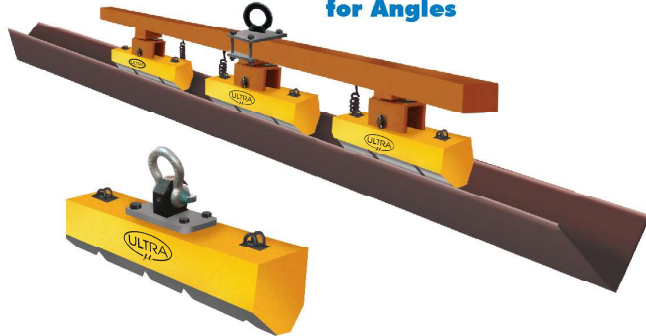
Please Specify Min. / Max. Size of the Sheet. (Length x Width x Thickness)



118 SERIES **UL - 827**

**"ULTRA" BRAND CUSTOM MADE MAGNETIC LIFTER
(Electrical / Electropermanent)**

**"ULTRA" EPM Lifter
for Angles**



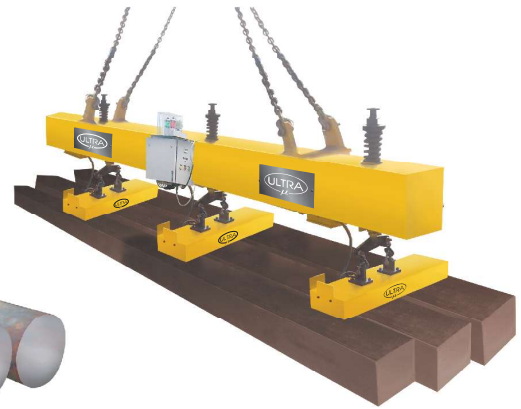
**"ULTRA" EPM Lifter
for Channel**



**"ULTRA" EPM
Lifter for Round**



**"ULTRA" EPM Lifter for
Pipes & Round Bar**



**"ULTRA" EPM
Lifter for Billets**

Magnet Execution	Working Principle	Lifting Capacity	Magnet Length	Magnet Width	Applications
 Rectangular magnet	Electro or Electro - Permanent	upto 60 Tons	upto 2000 mm	upto 1000 mm	Ingots, Blocks, Single Sheets or Stacks, High temp. Applications
 2-Pole magnet	Electro or Electro - Permanent	upto 8 Tons	400 to 1600 mm	75 to 600 mm	Profiles, Beams, Rounds Long & narrow parts
 Coil Magnet	Electro or Electro - Permanent	upto 35 Tons	upto 1600 mm	upto 1600 mm	Coil eye horizontal & Vertica, Slitted coils
 Bundle Magnet	Electro	upto 10 Tons	upto 1500 mm	upto 1000 mm	Bundles, Reinforcing steel, Pipes, Profiles
 Angle Magnet	Electro	upto 6 Tons	upto 2500 mm	upto 200 mm	Angles

“ULTRA” EPM Lifter for Angles



“ULTRA” EPM Lifter for Round



“ULTRA” EPM Lifter for Channel



“ULTRA” EPM Lifter for Billets



“ULTRA” EPM Lifter for Pipes & Bar